

Product datasheet for **TA335850**

FOXN2 Rabbit Polyclonal Antibody

Product data:

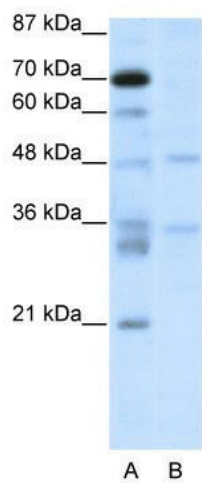
Product Type:	Primary Antibodies
Applications:	WB
Recommended Dilution:	WB
Reactivity:	Human
Host:	Rabbit
Isotype:	IgG
Clonality:	Polyclonal
Immunogen:	The immunogen for Anti-HTLF Antibody: synthetic peptide directed towards the C terminal of human HTLF. Synthetic peptide located within the following region: GKKMRKQTCQEIDEELKEAAGSLLHLAGIRTCLGSLISTAKTQNQKQRKK
Formulation:	Liquid. Purified antibody supplied in 1x PBS buffer with 0.09% (w/v) sodium azide and 2% sucrose. <i>Note that this product is shipped as lyophilized powder to China customers.</i>
Purification:	Protein A purified
Conjugation:	Unconjugated
Storage:	Store at -20°C as received.
Stability:	Stable for 12 months from date of receipt.
Predicted Protein Size:	47 kDa
Gene Name:	forkhead box N2
Database Link:	NP_002149 Entrez Gene 3344 Human P32314
Background:	Human T-cell leukemia virus enhancer factor (HTLF) may be a forkhead domain binding protein. It may function in the transcriptional regulation of the human T-cell leukemia virus long terminal repeat.
Synonyms:	HTLF
Note:	Immunogen Sequence Homology: Dog: 100%; Pig: 100%; Horse: 100%; Human: 100%; Bovine: 100%; Rabbit: 100%; Guinea pig: 93%; Rat: 86%



[View online »](#)

Protein Families: Transcription Factors

Product images:



WB Suggested Anti-HTLF Antibody Titration: 2.5 ug/ml; ELISA Titer: 1: 1562500; Positive Control: Jurkat cell lysate