

Product datasheet for **TA335847**

IRF1 Rabbit Polyclonal Antibody

Product data:

Product Type:	Primary Antibodies
Applications:	WB
Recommended Dilution:	WB
Reactivity:	Human
Host:	Rabbit
Isotype:	IgG
Clonality:	Polyclonal
Immunogen:	The immunogen for Anti-IRF1 Antibody is: synthetic peptide directed towards the C-terminal region of IRF1. Synthetic peptide located within the following region: YLLNEPGVQPTSVYGD FSCKEEPEIDSPGGDIGLSLQRVFTDLKNMDATW
Formulation:	Liquid. Purified antibody supplied in 1x PBS buffer with 0.09% (w/v) sodium azide and 2% sucrose. <i>Note that this product is shipped as lyophilized powder to China customers.</i>
Purification:	Affinity Purified
Conjugation:	Unconjugated
Storage:	Store at -20°C as received.
Stability:	Stable for 12 months from date of receipt.
Predicted Protein Size:	36 kDa
Gene Name:	interferon regulatory factor 1
Database Link:	NP_002189 Entrez Gene 3659 Human P10914
Background:	IRF1 is interferon regulatory factor 1, a member of the interferon regulatory transcription factor (IRF) family. IRF1 serves as an activator of interferons alpha and beta transcription, and in mouse it has been shown to be required for double-stranded RNA induction of these genes. IRF1 also functions as a transcription activator of genes induced by interferons alpha, beta, and gamma. Further, IRF1 has been shown to play roles in regulating apoptosis and tumor-suppression.



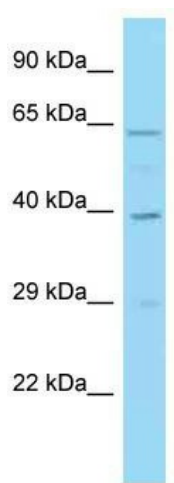
[View online »](#)

Synonyms: IRF-1; MAR

Note: Immunogen Sequence Homology: Pig: 100%; Human: 100%; Guinea pig: 100%; Horse: 93%; Rat: 86%; Sheep: 86%; Bovine: 86%; Dog: 79%; Mouse: 79%; Rabbit: 79%

Protein Families: Druggable Genome, Transcription Factors

Product images:



WB Suggested Anti-IRF1 Antibody; Titration: 1.0 ug/ml; Positive Control: Hela Whole Cell