

## Product datasheet for **TA335845**

### JUNB Rabbit Polyclonal Antibody

#### Product data:

Product Type:	Primary Antibodies
Applications:	WB
Recommended Dilution:	WB
Reactivity:	Human
Host:	Rabbit
Isotype:	IgG
Clonality:	Polyclonal
Immunogen:	The immunogen for Anti-JUNB Antibody: synthetic peptide directed towards the C terminal of human JUNB. Synthetic peptide located within the following region: VERKRLRNRLAATKCRKRKLERIARLEDKVKTLKAENAGLSSTAGLLREQ
Formulation:	Liquid. Purified antibody supplied in 1x PBS buffer with 0.09% (w/v) sodium azide and 2% sucrose. <i>Note that this product is shipped as lyophilized powder to China customers.</i>
Purification:	Affinity Purified
Conjugation:	Unconjugated
Storage:	Store at -20°C as received.
Stability:	Stable for 12 months from date of receipt.
Predicted Protein Size:	36 kDa
Gene Name:	JunB proto-oncogene, AP-1 transcription factor subunit
Database Link:	<a href="#">NP_002220</a> <a href="#">Entrez Gene 3726 Human</a> <a href="#">P17275</a>



[View online »](#)

**Background:**

The c-Jun proto-oncogene was first identified as the cellular homolog of the avian sarcoma virus v-Jun oncogene. The c-Jun protein, along with c-Fos, is a component of the AP-1 transcriptional complex. c-Jun can form either Jun/Jun homodimers or Jun/Fos heterodimers via the leucine repeats in both proteins. Jun B and Jun D, have been shown to be almost identical to c-Jun in their C-terminal regions, which are involved in dimerization and DNA binding, whereas their N-terminal domains, which are involved in transcriptional activation, diverge. JunB is involved in many types of human carcinoma including T-cell lymphomas, CML, primary cutaneous lymphomas. Aberrantly expressed c-Jun and JunB are a hallmark of Hodgkin lymphoma cells, stimulate proliferation and synergize with NF-kappa B. JunB potentiates function of BRCA1 activation domain 1 (AD1) through a coiled-coil-mediated interaction. JunB is an important regulator of erythroid Differentiation.

**Synonyms:**

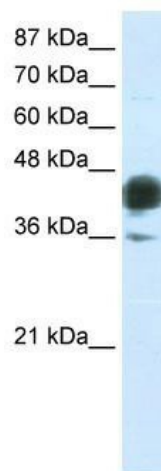
AP-1

**Note:**

Immunogen Sequence Homology: Dog: 100%; Pig: 100%; Rat: 100%; Horse: 100%; Human: 100%; Mouse: 100%; Sheep: 100%; Bovine: 100%; Guinea pig: 100%; Yeast: 91%; Goat: 85%; Rabbit: 85%; Zebrafish: 85%

**Protein Families:**

Druggable Genome, Transcription Factors

**Product images:**

WB Suggested Anti-JUNB Antibody Titration: 0.2-1 ug/ml; ELISA Titer: 1: 1562500; Positive Control: Transfected 293T