

## Product datasheet for **TA335843**

### Karyopherin beta 3 (IPO5) Rabbit Polyclonal Antibody

#### Product data:

Product Type:	Primary Antibodies
Applications:	WB
Recommended Dilution:	WB
Reactivity:	Human
Host:	Rabbit
Isotype:	IgG
Clonality:	Polyclonal
Immunogen:	The immunogen for Anti-IPO5 Antibody: synthetic peptide directed towards the N terminal of human IPO5. Synthetic peptide located within the following region: GNNQWPEGLKFLFDSVSSQNVGLREAALHIFWNFPGIFGNQQQHLYLDVIK
Formulation:	Liquid. Purified antibody supplied in 1x PBS buffer with 0.09% (w/v) sodium azide and 2% sucrose. <i>Note that this product is shipped as lyophilized powder to China customers.</i>
Purification:	Affinity Purified
Conjugation:	Unconjugated
Storage:	Store at -20°C as received.
Stability:	Stable for 12 months from date of receipt.
Predicted Protein Size:	125 kDa
Gene Name:	importin 5
Database Link:	<a href="#">NP_002262</a> <a href="#">Entrez Gene 3843 Human</a> <a href="#">O00410</a>



[View online »](#)

**Background:**

Nucleocytoplasmic transport, a signal- and energy-dependent process, takes place through nuclear pore complexes embedded in the nuclear envelope. The import of proteins containing a nuclear localization signal (NLS) requires the NLS import receptor, a heterodimer of importin alpha and beta subunits also known as karyopherins. Importin alpha binds the NLS-containing cargo in the cytoplasm and importin beta docks the complex at the cytoplasmic side of the nuclear pore complex. In the presence of nucleoside triphosphates and the small GTP binding protein Ran, the complex moves into the nuclear pore complex and the importin subunits dissociate. Importin alpha enters the nucleoplasm with its passenger protein and importin beta remains at the pore. Interactions between importin beta and the FG repeats of nucleoporins are essential in translocation through the pore complex. The protein encoded by this gene is a member of the importin beta family.

**Synonyms:**

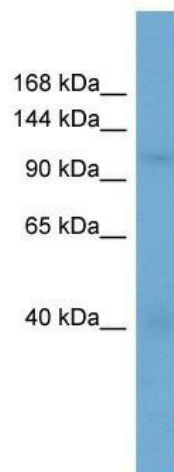
IMB3; imp5; KPNB3; Pse1; RANBP5

**Note:**

Immunogen Sequence Homology: Human: 100%; Dog: 93%; Pig: 93%; Rat: 93%; Horse: 93%; Mouse: 93%; Bovine: 93%; Rabbit: 93%; Guinea pig: 93%; Zebrafish: 86%

**Protein Families:**

Druggable Genome

**Product images:**

WB Suggested Anti-IPO5 Antibody Titration: 0.2-1 ug/ml; ELISA Titer: 1: 1562500; Positive Control: Jurkat cell lysate. IPO5 is strongly supported by BioGPS gene expression data to be expressed in Human Jurkat cells