

## Product datasheet for **TA335842**

### LAF4 (AFF3) Rabbit Polyclonal Antibody

#### Product data:

Product Type:	Primary Antibodies
Applications:	WB
Recommended Dilution:	WB
Reactivity:	Human
Host:	Rabbit
Isotype:	IgG
Clonality:	Polyclonal
Immunogen:	The immunogen for Anti-AFF3 Antibody: synthetic peptide directed towards the middle region of human AFF3. Synthetic peptide located within the following region: APATKDSSESAPPSHTSDTPAEKALPKSKRKRKCDNEDDYREIKKSQGEKD
Formulation:	Liquid. Purified antibody supplied in 1x PBS buffer with 0.09% (w/v) sodium azide and 2% sucrose. <i>Note that this product is shipped as lyophilized powder to China customers.</i>
Purification:	Affinity Purified
Conjugation:	Unconjugated
Storage:	Store at -20°C as received.
Stability:	Stable for 12 months from date of receipt.
Predicted Protein Size:	133 kDa
Gene Name:	AF4/FMR2 family member 3
Database Link:	<a href="#">NP_002276</a> <a href="#">Entrez Gene 3899 Human</a> <a href="#">P51826</a>



[View online »](#)

**Background:**

AFF3 is a tissue-restricted nuclear transcriptional activator that is preferentially expressed in lymphoid tissue. Isolation of this protein initially defined a highly conserved LAF4/MLLT2 gene family of nuclear transcription factors that may function in lymphoid development and oncogenesis. In some ALL patients, this gene has been found fused to the gene for MLL. This gene encodes a tissue-restricted nuclear transcriptional activator that is preferentially expressed in lymphoid tissue. Isolation of this protein initially defined a highly conserved LAF4/MLLT2 gene family of nuclear transcription factors that may function in lymphoid development and oncogenesis. In some ALL patients, this gene has been found fused to the gene for MLL. Multiple alternatively spliced transcript variants that encode different proteins have been found for this gene.

**Synonyms:**

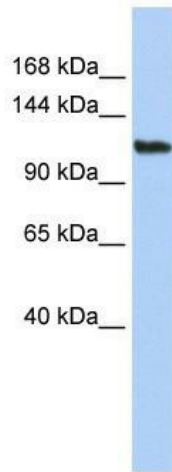
LAF4; MLLT2-like

**Note:**

Immunogen Sequence Homology: Human: 100%; Rat: 93%; Mouse: 93%; Dog: 86%; Pig: 86%; Rabbit: 77%

**Protein Families:**

Transcription Factors

**Product images:**

WB Suggested Anti-AFF3 Antibody Titration: 0.2-1 ug/ml; ELISA Titer: 1:12500; Positive Control: HepG2 cell lysate