

Product datasheet for **TA335841**

Lactate Dehydrogenase C (LDHC) Rabbit Polyclonal Antibody

Product data:

Product Type:	Primary Antibodies
Applications:	WB
Recommended Dilution:	WB
Reactivity:	Human
Host:	Rabbit
Isotype:	IgG
Clonality:	Polyclonal
Immunogen:	The immunogen for Anti-LDHC Antibody: synthetic peptide directed towards the middle region of human LDHC. Synthetic peptide located within the following region: IVVTAGARQQEGETRLALVQRNVAIMKSIIPAIVHYSPDCKILVSNPV
Formulation:	Liquid. Purified antibody supplied in 1x PBS buffer with 0.09% (w/v) sodium azide and 2% sucrose. <i>Note that this product is shipped as lyophilized powder to China customers.</i>
Purification:	Affinity Purified
Conjugation:	Unconjugated
Storage:	Store at -20°C as received.
Stability:	Stable for 12 months from date of receipt.
Predicted Protein Size:	36 kDa
Gene Name:	lactate dehydrogenase C
Database Link:	NP_002292 Entrez Gene 3948 Human P07864
Background:	Lactate dehydrogenase C catalyzes the conversion of L-lactate and NAD to pyruvate and NADH in the final step of anaerobic glycolysis. LDHC is testis-specific and belongs to the lactate dehydrogenase family. Lactate dehydrogenase C catalyzes the conversion of L-lactate and NAD to pyruvate and NADH in the final step of anaerobic glycolysis. LDHC is testis-specific and belongs to the lactate dehydrogenase family. Two transcript variants have been detected which differ in the 5' untranslated region.



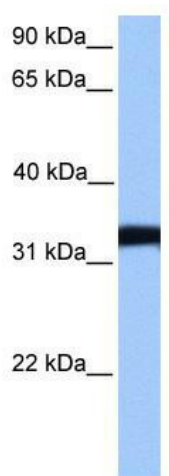
[View online »](#)

Synonyms: CT32; LDH3; LDHX

Note: Immunogen Sequence Homology: Dog: 100%; Rat: 100%; Horse: 100%; Human: 100%; Mouse: 100%; Rabbit: 100%; Pig: 93%; Bovine: 93%; Zebrafish: 93%; Goat: 92%; Guinea pig: 92%

Protein Pathways: Cysteine and methionine metabolism, Glycolysis / Gluconeogenesis, Metabolic pathways, Propanoate metabolism, Pyruvate metabolism

Product images:



WB Suggested Anti-LDHC Antibody Titration: 0.2-1 ug/ml; Positive Control: NTERA2 cell lysate