

Product datasheet for **TA335840**

LMX1B Rabbit Polyclonal Antibody

Product data:

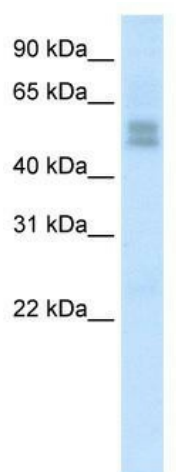
Product Type:	Primary Antibodies
Applications:	WB
Recommended Dilution:	WB
Reactivity:	Human
Host:	Rabbit
Isotype:	IgG
Clonality:	Polyclonal
Immunogen:	The immunogen for Anti-LMX1B Antibody: synthetic peptide directed towards the C terminal of human LMX1B. Synthetic peptide located within the following region: QSPYGSDDPFQQLTPPQMPGNDSIFHDIDSDTSLTSLSDCFLGSSDVGS
Formulation:	Liquid. Purified antibody supplied in 1x PBS buffer with 0.09% (w/v) sodium azide and 2% sucrose. <i>Note that this product is shipped as lyophilized powder to China customers.</i>
Purification:	Protein A purified
Conjugation:	Unconjugated
Storage:	Store at -20°C as received.
Stability:	Stable for 12 months from date of receipt.
Predicted Protein Size:	42 kDa
Gene Name:	LIM homeobox transcription factor 1 beta
Database Link:	NP_002307 Entrez Gene 4010 Human O60663
Background:	LMX1B is essential for the specification of dorsal limb fate at both the zeugopodal and autopodal levels. Defects in LMX1B are the cause of nail-patella syndrome (NPS) also known as Onychoosteodysplasia.
Synonyms:	LMX1.2; NPS1
Note:	Immunogen Sequence Homology: Dog: 100%; Pig: 100%; Rat: 100%; Horse: 100%; Human: 100%; Mouse: 100%; Bovine: 100%; Rabbit: 100%; Zebrafish: 100%; Guinea pig: 100%



[View online »](#)

Protein Families: Transcription Factors

Product images:



WB Suggested Anti-LMX1B Antibody Titration: 2.5 ug/ml; ELISA Titer: 1: 312500; Positive Control: Human Muscle