

## Product datasheet for **TA335825**

### NEUROD1 Rabbit Polyclonal Antibody

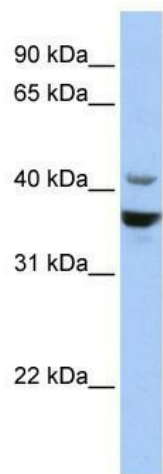
#### Product data:

Product Type:	Primary Antibodies
Applications:	WB
Recommended Dilution:	WB
Reactivity:	Human
Host:	Rabbit
Isotype:	IgG
Clonality:	Polyclonal
Immunogen:	The immunogen for Anti-NEUROD1 Antibody: synthetic peptide directed towards the middle region of human NEUROD1. Synthetic peptide located within the following region: ATLAGAQSHGSIFSGTAAPRCEIPIDNIMSFDSHSHHERVMSAQLNAIFH
Formulation:	Liquid. Purified antibody supplied in 1x PBS buffer with 0.09% (w/v) sodium azide and 2% sucrose. <i>Note that this product is shipped as lyophilized powder to China customers.</i>
Purification:	Affinity Purified
Conjugation:	Unconjugated
Storage:	Store at -20°C as received.
Stability:	Stable for 12 months from date of receipt.
Predicted Protein Size:	40 kDa
Gene Name:	neuronal differentiation 1
Database Link:	<a href="#">NP_002491</a> <a href="#">Entrez Gene 4760 Human Q13562</a>



[View online »](#)

<b>Background:</b>	NeuroD1 is a member of the bHLH family that involves in neuroendocrine differentiation. This gene encodes a member of the NeuroD family of basic helix-loop-helix (bHLH) transcription factors. The protein forms heterodimers with other bHLH proteins and activates transcription of genes that contain a specific DNA sequence known as the E-box. It regulates expression of the insulin gene, and mutations in this gene result in type II diabetes mellitus. Publication Note: This RefSeq record includes a subset of the publications that are available for this gene. Please see the Entrez Gene record to access additional publications.
<b>Synonyms:</b>	BETA2; BHF-1; bHLHa3; MODY6; NEUROD
<b>Note:</b>	Immunogen Sequence Homology: Pig: 100%; Rat: 100%; Horse: 100%; Human: 100%; Mouse: 100%; Sheep: 100%; Bovine: 100%; Zebrafish: 93%; Guinea pig: 93%
<b>Protein Families:</b>	Adult stem cells, Druggable Genome, Embryonic stem cells, ES Cell Differentiation/IPS, Transcription Factors
<b>Protein Pathways:</b>	Maturity onset diabetes of the young

**Product images:**

WB Suggested Anti-NEUROD1 Antibody Titration:  
0.2-1 ug/ml; ELISA Titer: 1: 62500; Positive  
Control: HepG2 cell lysate