

## Product datasheet for **TA335824**

### **IKB beta (NFKBIB) Rabbit Polyclonal Antibody**

#### **Product data:**

<b>Product Type:</b>	Primary Antibodies
<b>Applications:</b>	WB
<b>Recommended Dilution:</b>	WB
<b>Reactivity:</b>	Human, Mouse
<b>Host:</b>	Rabbit
<b>Isotype:</b>	IgG
<b>Clonality:</b>	Polyclonal
<b>Immunogen:</b>	The immunogen for Anti-NFKBIB Antibody: synthetic peptide directed towards the N terminal of human NFKBIB. Synthetic peptide located within the following region: DLQNDLGQTALHLAAILGETSTVEKLYAAGAGLCVAERRGHTALHLACRVCA
<b>Formulation:</b>	Liquid. Purified antibody supplied in 1x PBS buffer with 0.09% (w/v) sodium azide and 2% sucrose. <i>Note that this product is shipped as lyophilized powder to China customers.</i>
<b>Purification:</b>	Protein A purified
<b>Conjugation:</b>	Unconjugated
<b>Storage:</b>	Store at -20°C as received.
<b>Stability:</b>	Stable for 12 months from date of receipt.
<b>Predicted Protein Size:</b>	38 kDa
<b>Gene Name:</b>	NFKB inhibitor beta
<b>Database Link:</b>	<a href="#">NP_002494</a> <a href="#">Entrez Gene 18036 Mouse</a> <a href="#">Entrez Gene 4793 Human</a> <a href="#">Q15653</a>
<b>Background:</b>	Inhibition of NFkappa-B activity by the hepatitis C virus core protein might be related to its physical interaction with and interrupted nuclear localization of IKKbeta. Increased nuclear factor-kappaB (NF-kB) activity in the amnion during labor is associated with an increase in the expression of NF-kBp65 and of the NF-kB binding proteins IkbA, IkbB-1 and IkbB-2. IkappaBbeta may be a novel target for transcription factors of the HMG-box SRY/Sox family and imply a potential role for NF-kappaB/IkappaBbeta in spermatogenesis.



[View online »](#)

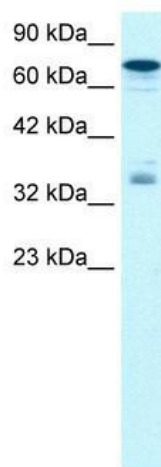
**Synonyms:** IKBB; TRIP9

**Note:** Immunogen Sequence Homology: Human: 100%; Dog: 93%; Pig: 93%; Rat: 93%; Mouse: 93%; Rabbit: 93%; Guinea pig: 93%; Yeast: 91%; Horse: 86%; Bovine: 86%

**Protein Families:** Stem cell - Pluripotency, Transcription Factors

**Protein Pathways:** Adipocytokine signaling pathway, B cell receptor signaling pathway, Chemokine signaling pathway, Cytosolic DNA-sensing pathway, Neurotrophin signaling pathway, NOD-like receptor signaling pathway, RIG-I-like receptor signaling pathway, T cell receptor signaling pathway

### Product images:



WB Suggested Anti-NFKBIB Antibody Titration:  
1.25 ug/ml; ELISA Titer: 1:62500; Positive Control:  
HepG2 cell lysate