

## Product datasheet for **TA335820**

### Nkx2.2 (NKX2-2) Rabbit Polyclonal Antibody

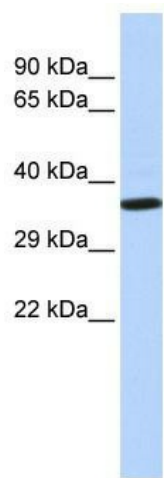
#### Product data:

Product Type:	Primary Antibodies
Applications:	WB
Recommended Dilution:	WB
Reactivity:	Human
Host:	Rabbit
Isotype:	IgG
Clonality:	Polyclonal
Immunogen:	The immunogen for Anti-NKX2-2 Antibody: synthetic peptide directed towards the N terminal of human NKX2-2. Synthetic peptide located within the following region: MSLTNKTGFSVKDILDLPDTNDEEGSVAEGPEEENEGPEPAKRAGPLGQ
Formulation:	Liquid. Purified antibody supplied in 1x PBS buffer with 0.09% (w/v) sodium azide and 2% sucrose. <i>Note that this product is shipped as lyophilized powder to China customers.</i>
Purification:	Affinity Purified
Conjugation:	Unconjugated
Storage:	Store at -20°C as received.
Stability:	Stable for 12 months from date of receipt.
Predicted Protein Size:	30 kDa
Gene Name:	NK2 homeobox 2
Database Link:	<a href="#">NP_002500</a> <a href="#">Entrez Gene 4821 Human</a> <a href="#">O95096</a>



[View online »](#)

<b>Background:</b>	Nkx2-2 contains 1 homeobox DNA-binding domain which is essential for interaction with OLIG2. Nkx2-2 may be involved in specifying diencephalic neuromeric boundaries, and in controlling the expression of genes that play a role in axonal guidance. The protein encoded by this gene contains a homeobox domain and may be involved in the morphogenesis of the central nervous system. This gene is found on chromosome 20 near NKX2-4, and these two genes appear to be duplicated on chromosome 14 in the form of TITF1 and NKX2-8. The encoded protein is likely to be a nuclear transcription factor.
<b>Synonyms:</b>	NKX2.2; NKX2B
<b>Note:</b>	Immunogen Sequence Homology: Dog: 100%; Pig: 100%; Rat: 100%; Horse: 100%; Human: 100%; Sheep: 100%; Bovine: 100%; Zebrafish: 100%; Guinea pig: 100%; Mouse: 93%; Rabbit: 93%
<b>Protein Families:</b>	Transcription Factors
<b>Protein Pathways:</b>	Maturity onset diabetes of the young

**Product images:**

WB Suggested Anti-NKX2-2 Antibody Titration:  
0.2-1 ug/ml; ELISA Titer: 1: 1562500; Positive  
Control: Human Placenta

# NKX2-2

