

Product datasheet for **TA335818**

GPNMB Rabbit Polyclonal Antibody

Product data:

Product Type:	Primary Antibodies
Applications:	IHC, WB
Recommended Dilution:	WB, IHC
Reactivity:	Human
Host:	Rabbit
Isotype:	IgG
Clonality:	Polyclonal
Immunogen:	The immunogen for Anti-GPNMB Antibody: synthetic peptide directed towards the N terminal of human GPNMB. Synthetic peptide located within the following region: DENDWNEKLYPVWKRGD MRWKN SWKGG R VQAVLTSDSPALVGSNITFAVN
Formulation:	Liquid. Purified antibody supplied in 1x PBS buffer with 0.09% (w/v) sodium azide and 2% sucrose. <i>Note that this product is shipped as lyophilized powder to China customers.</i>
Purification:	Affinity Purified
Conjugation:	Unconjugated
Storage:	Store at -20°C as received.
Stability:	Stable for 12 months from date of receipt.
Predicted Protein Size:	60 kDa
Gene Name:	glycoprotein nmb
Database Link:	NP_002501 Entrez Gene 10457 Human Q14956



[View online »](#)

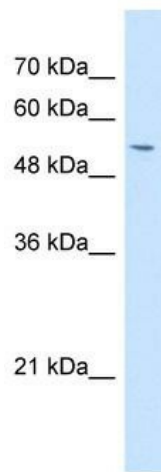
Background: GPNMB is a type I transmembrane glycoprotein which shows homology to the pMEL17 precursor, a melanocyte-specific protein. GPNMB shows expression in the lowly metastatic human melanoma cell lines and xenografts but does not show expression in the highly metastatic cell lines. GPNMB may be involved in growth delay and reduction of metastatic potential. The protein encoded by this gene is a type I transmembrane glycoprotein which shows homology to the pMEL17 precursor, a melanocyte-specific protein. GPNMB shows expression in the lowly metastatic human melanoma cell lines and xenografts but does not show expression in the highly metastatic cell lines. GPNMB may be involved in growth delay and reduction of metastatic potential. Two transcript variants encoding different isoforms have been found for this gene.

Synonyms: HGFIN; NMB

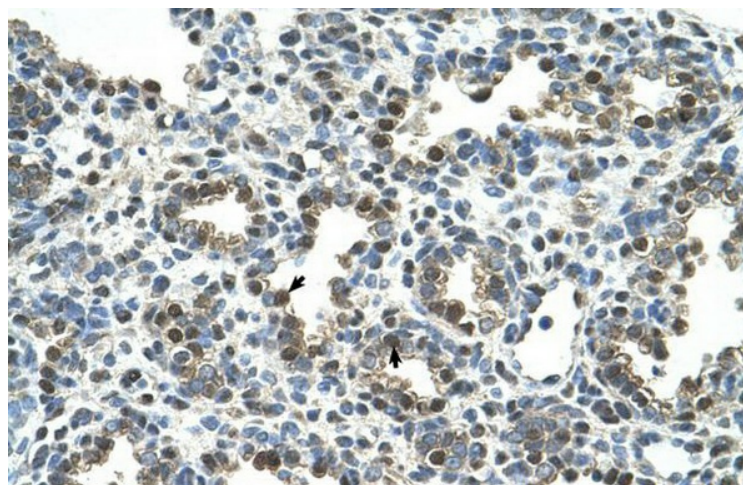
Note: Immunogen Sequence Homology: Horse: 100%; Human: 100%; Mouse: 100%; Bovine: 100%; Rabbit: 100%; Pig: 93%; Rat: 93%; Guinea pig: 93%; Dog: 79%

Protein Families: Druggable Genome, Transmembrane

Product images:



WB Suggested Anti-GPNMB Antibody Titration: 1 ug/ml; Positive Control: HepG2 cell lysate



Human Lung