

## Product datasheet for **TA335815**

### ODF2 Rabbit Polyclonal Antibody

#### Product data:

Product Type:	Primary Antibodies
Applications:	WB
Recommended Dilution:	WB
Reactivity:	Human
Host:	Rabbit
Isotype:	IgG
Clonality:	Polyclonal
Immunogen:	The immunogen for Anti-ODF2 Antibody: synthetic peptide directed towards the N terminal of human ODF2. Synthetic peptide located within the following region: TCTDINTLRQKELLQKLSTFEETNRTLRLDLLREQHCKEDSERLMEQQG
Formulation:	Liquid. Purified antibody supplied in 1x PBS buffer with 0.09% (w/v) sodium azide and 2% sucrose. <i>Note that this product is shipped as lyophilized powder to China customers.</i>
Purification:	Affinity Purified
Conjugation:	Unconjugated
Storage:	Store at -20°C as received.
Stability:	Stable for 12 months from date of receipt.
Predicted Protein Size:	89 kDa
Gene Name:	outer dense fiber of sperm tails 2
Database Link:	<a href="#">NP_002531</a> <a href="#">Entrez Gene 4957 Human</a> <a href="#">Q5BJF6</a>



[View online »](#)

**Background:**

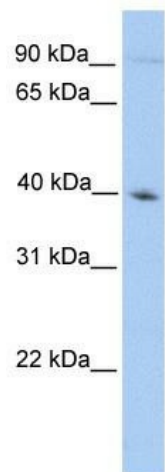
The outer dense fibers are cytoskeletal structures that surround the axoneme in the middle piece and principal piece of the sperm tail. The fibers function in maintaining the elastic structure and recoil of the sperm tail as well as in protecting the tail from shear forces during epididymal transport and ejaculation. Defects in the outer dense fibers lead to abnormal sperm morphology and infertility. ODF2 is one of the major outer dense fiber proteins. The outer dense fibers are cytoskeletal structures that surround the axoneme in the middle piece and principal piece of the sperm tail. The fibers function in maintaining the elastic structure and recoil of the sperm tail as well as in protecting the tail from shear forces during epididymal transport and ejaculation. Defects in the outer dense fibers lead to abnormal sperm morphology and infertility. This gene encodes one of the major outer dense fiber proteins. Multiple protein isoforms are encoded by transcript variants of this gene; however, not all isoforms and variants have been fully described.

**Synonyms:**

1; 2; CT134; ODF2; ODF84

**Note:**

Immunogen Sequence Homology: Dog: 100%; Pig: 100%; Rat: 100%; Horse: 100%; Human: 100%; Mouse: 100%; Bovine: 100%; Rabbit: 100%; Guinea pig: 100%; Zebrafish: 86%

**Product images:**

WB Suggested Anti-ODF2 Antibody Titration: 0.2-1 ug/ml; Positive Control: HepG2 cell lysate