

Product datasheet for **TA335813**

PBX2 Rabbit Polyclonal Antibody

Product data:

Product Type:	Primary Antibodies
Applications:	WB
Recommended Dilution:	WB
Reactivity:	Mouse, Human
Host:	Rabbit
Isotype:	IgG
Clonality:	Polyclonal
Immunogen:	The immunogen for Anti-PBX2 Antibody: synthetic peptide directed towards the N terminal of human PBX2. Synthetic peptide located within the following region: PGGGRRGGLGLVSGEPGGPGEPGGDPGGGSGGVPGGRGKQDIGDILQQI
Formulation:	Liquid. Purified antibody supplied in 1x PBS buffer with 0.09% (w/v) sodium azide and 2% sucrose. <i>Note that this product is shipped as lyophilized powder to China customers.</i>
Purification:	Affinity Purified
Conjugation:	Unconjugated
Storage:	Store at -20°C as received.
Stability:	Stable for 12 months from date of receipt.
Predicted Protein Size:	46 kDa
Gene Name:	PBX homeobox 2
Database Link:	NP_002577 Entrez Gene 18515 Mouse Entrez Gene 5089 Human P40425



[View online »](#)

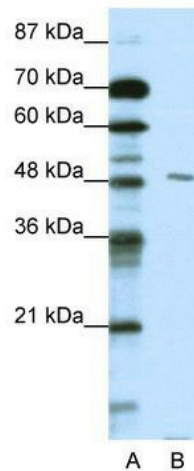
Background: PBX2 is a ubiquitously expressed member of the TALE/PBX homeobox family. PBX2 gene was identified by its similarity to a homeobox gene which is involved in t(1;19) translocation in acute pre-B-cell leukemias. PBX2 is a transcriptional activator which binds to the TLX1 promoter. This gene encodes a ubiquitously expressed member of the TALE/PBX homeobox family. It was identified by its similarity to a homeobox gene which is involved in t(1;19) translocation in acute pre-B-cell leukemias. This protein is a transcriptional activator which binds to the TLX1 promoter. The gene is located within the major histocompatibility complex (MHC) on chromosome 6.

Synonyms: G17; HOX12; PBX2MHC

Note: Immunogen Sequence Homology: Dog: 100%; Pig: 100%; Rat: 100%; Human: 100%; Mouse: 100%; Bovine: 100%; Rabbit: 100%; Guinea pig: 100%; Horse: 93%

Protein Families: Transcription Factors

Product images:



WB Suggested Anti-PBX2 Antibody Titration: 0.2-1 ug/ml; ELISA Titer: 1: 312500; Positive Control: HepG2 cell lysate
There is BioGPS gene expression data showing that PBX2 is expressed in HepG2