

## Product datasheet for TA335812

### PITX1 Rabbit Polyclonal Antibody

#### Product data:

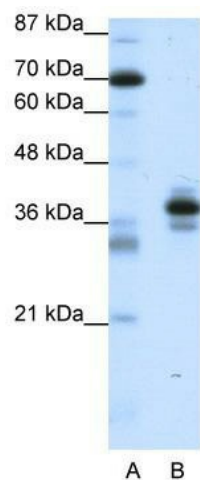
Product Type:	Primary Antibodies
Applications:	WB
Recommended Dilution:	WB
Reactivity:	Mouse, Human
Host:	Rabbit
Isotype:	IgG
Clonality:	Polyclonal
Immunogen:	The immunogen for Anti-PITX1 Antibody: synthetic peptide directed towards the C terminal of human PITX1. Synthetic peptide located within the following region: GTPASPSVYRDTCNSSLASLRLKSKQHSSFGYGGGLQGPASGLNACQYNS
Formulation:	Liquid. Purified antibody supplied in 1x PBS buffer with 0.09% (w/v) sodium azide and 2% sucrose. <i>Note that this product is shipped as lyophilized powder to China customers.</i>
Purification:	Protein A purified
Conjugation:	Unconjugated
Storage:	Store at -20°C as received.
Stability:	Stable for 12 months from date of receipt.
Predicted Protein Size:	34 kDa
Gene Name:	paired like homeodomain 1
Database Link:	<a href="#">NP_002644</a> <a href="#">Entrez Gene 18740 Mouse</a> <a href="#">Entrez Gene 5307 Human</a> <a href="#">P78337</a>
Background:	PITX1 is a member of the RIEG/PITX homeobox family, which is involved in organ development and left-right asymmetry. This protein acts as a transcriptional regulator involved in basal and hormone-regulated activity of prolactin.
Synonyms:	BFT; CCF; LBNBG; POTX; PTX1
Note:	Immunogen Sequence Homology: Dog: 93%; Pig: 93%; Rat: 93%; Horse: 93%; Human: 93%; Mouse: 93%; Bovine: 93%; Guinea pig: 93%; Zebrafish: 79%



[View online »](#)

Protein Families: Transcription Factors

### Product images:



WB Suggested Anti-PITX1 Antibody Titration: 1.25 ug/ml; ELISA Titer: 1: 1562500; Positive Control: Jurkat cell lysate