

Product datasheet for **TA335810**

PLAG1 Rabbit Polyclonal Antibody

Product data:

Product Type:	Primary Antibodies
Applications:	WB
Recommended Dilution:	WB
Reactivity:	Human
Host:	Rabbit
Isotype:	IgG
Clonality:	Polyclonal
Immunogen:	The immunogen for Anti-PLAG1 Antibody: synthetic peptide directed towards the N terminal of human PLAG1. Synthetic peptide located within the following region: MATVIPGDLSEVRDTQKVPSGKRKRGETKPRKNFPCQLCDKAFNSVEKLK
Formulation:	Liquid. Purified antibody supplied in 1x PBS buffer with 0.09% (w/v) sodium azide and 2% sucrose. <i>Note that this product is shipped as lyophilized powder to China customers.</i>
Purification:	Affinity Purified
Conjugation:	Unconjugated
Storage:	Store at -20°C as received.
Stability:	Stable for 12 months from date of receipt.
Predicted Protein Size:	56 kDa
Gene Name:	PLAG1 zinc finger
Database Link:	NP_002646 Entrez Gene 5324 Human Q6DJT9



[View online »](#)

Background:

PLAG1 is a zinc finger protein with 2 putative nuclear localization signals. PLAG1, which is developmentally regulated, has been shown to be consistently rearranged in pleomorphic adenomas of the salivary glands. PLAG1 is activated by the reciprocal chromosomal translocations involving 8q12 in a subset of salivary gland pleomorphic adenomas. PLAG1 encodes a zinc finger protein with 2 putative nuclear localization signals. PLAG1, which is developmentally regulated, has been shown to be consistently rearranged in pleomorphic adenomas of the salivary glands. PLAG1 is activated by the reciprocal chromosomal translocations involving 8q12 in a subset of salivary gland pleomorphic adenomas. Three transcript variants encoding two different isoforms have been found for this gene.

Synonyms:

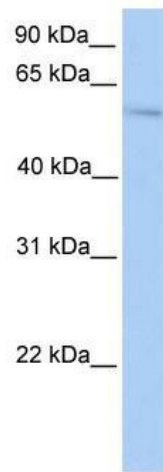
PSA; SGPA; ZNF912

Note:

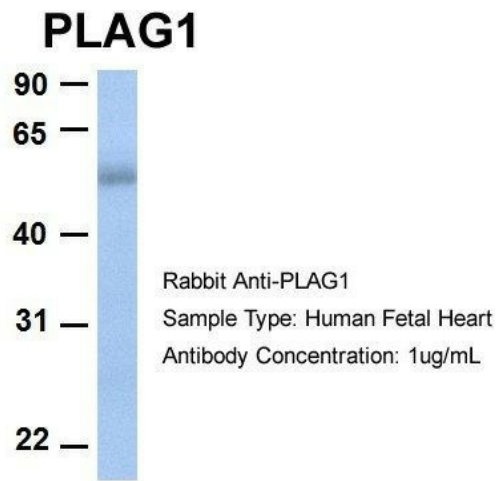
Immunogen Sequence Homology: Dog: 100%; Pig: 100%; Rat: 100%; Horse: 100%; Human: 100%; Bovine: 100%; Rabbit: 100%; Guinea pig: 100%; Mouse: 93%

Protein Families:

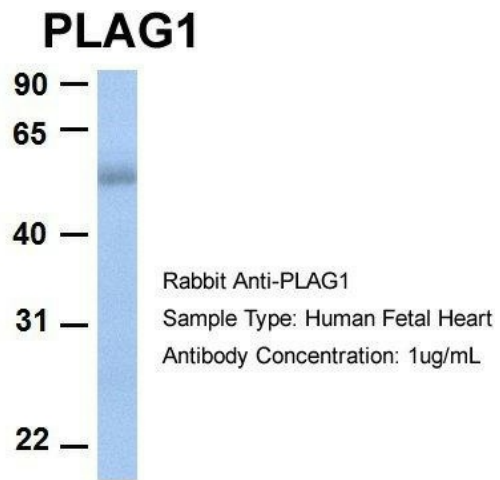
Transcription Factors

Product images:

WB Suggested Anti-PLAG1 Antibody Titration: 0.2-1 ug/ml; Positive Control: Hela cell lysate



Host: Rabbit; Target Name: PLAG1; Sample
Tissue: Human Fetal Heart; Antibody Dilution: 1.0
ug/ml



Host: Rabbit; Target Name: PLAG1; Sample
Tissue: Human Fetal Heart; Antibody Dilution: 1.0
ug/ml