

Product datasheet for **TA335809**

Phospholipase D2 (PLD2) Rabbit Polyclonal Antibody

Product data:

Product Type:	Primary Antibodies
Applications:	WB
Recommended Dilution:	WB
Reactivity:	Human
Host:	Rabbit
Isotype:	IgG
Clonality:	Polyclonal
Immunogen:	The immunogen for Anti-PLD2 Antibody: synthetic peptide directed towards the N terminal of human PLD2. Synthetic peptide located within the following region: MTATPESLFPTGDELDSSQLQMESDEVDTLKEGEDPADRMHPFLAIYELQ
Formulation:	Liquid. Purified antibody supplied in 1x PBS buffer with 0.09% (w/v) sodium azide and 2% sucrose. <i>Note that this product is shipped as lyophilized powder to China customers.</i>
Purification:	Affinity Purified
Conjugation:	Unconjugated
Storage:	Store at -20°C as received.
Stability:	Stable for 12 months from date of receipt.
Predicted Protein Size:	106 kDa
Gene Name:	phospholipase D2
Database Link:	NP_002654 Entrez Gene 5338 Human O14939



[View online »](#)

Background:

Phosphatidylcholine (PC)-specific phospholipases D (PLDs; EC 3.1.4.4) catalyze the hydrolysis of PC to produce phosphatidic acid and choline. Activation of PC-specific PLDs occurs as a consequence of agonist stimulation of both tyrosine kinase and G protein-coupled receptors. PC-specific PLDs have been proposed to function in regulated secretion, cytoskeletal reorganization, transcriptional regulation, and cell cycle control. Phosphatidylcholine (PC)-specific phospholipases D (PLDs; EC 3.1.4.4) catalyze the hydrolysis of PC to produce phosphatidic acid and choline. Activation of PC-specific PLDs occurs as a consequence of agonist stimulation of both tyrosine kinase and G protein-coupled receptors. PC-specific PLDs have been proposed to function in regulated secretion, cytoskeletal reorganization, transcriptional regulation, and cell cycle control. [supplied by OMIM]. Publication Note: This RefSeq record includes a subset of the publications that are available for this gene. Please see the Entrez Gene record to access additional publications. PRIMARYREFSEQ_SPAN PRIMARY_IDENTIFIER PRIMARY_SPAN COMP 1-14 AF033850.1 61-74 15-614 BC015033.1 1-600 615-1279 BC056871.1 549-1213 1280-1830 BC015033.1 1266-1816 1831-1995 BC056871.1 1765-1929 1996-3489 BC015033.1 1982-3475

Synonyms:

choline phosphatase 2; phospholipase D2

Note:

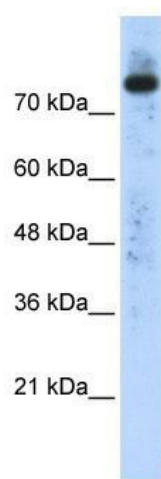
Immunogen Sequence Homology: Human: 100%; Horse: 86%; Bovine: 86%; Rabbit: 86%; Dog: 85%; Pig: 83%; Guinea pig: 83%; Rat: 75%; Mouse: 75%

Protein Families:

Druggable Genome

Protein Pathways:

Endocytosis, Ether lipid metabolism, Fc gamma R-mediated phagocytosis, Glycerophospholipid metabolism, GnRH signaling pathway, Metabolic pathways

Product images:

WB Suggested Anti-PLD2 Antibody Titration: 0.2-1 ug/ml; ELISA Titer: 1: 62500; Positive Control: Transfected 293T