

Product datasheet for **TA335808**

Oct-1 (POU2F1) Rabbit Polyclonal Antibody

Product data:

Product Type:	Primary Antibodies
Applications:	WB
Recommended Dilution:	WB
Reactivity:	Human
Host:	Rabbit
Isotype:	IgG
Clonality:	Polyclonal
Immunogen:	The immunogen for Anti-POU2F1 Antibody: synthetic peptide directed towards the N terminal of human POU2F1. Synthetic peptide located within the following region: MADGGAASQDESSAAAAAADSRMNNPSETSKPSMESGDGNTGTQTNGLD
Formulation:	Liquid. Purified antibody supplied in 1x PBS buffer with 0.09% (w/v) sodium azide and 2% sucrose. <i>Note that this product is shipped as lyophilized powder to China customers.</i>
Purification:	Affinity Purified
Conjugation:	Unconjugated
Storage:	Store at -20°C as received.
Stability:	Stable for 12 months from date of receipt.
Predicted Protein Size:	76 kDa
Gene Name:	POU class 2 homeobox 1
Database Link:	NP_002688 Entrez Gene 5451 Human P14859
Background:	The OCT1 transcription factor was among the first identified members of the POU transcription factor family (summarized by Sturm et al., 1993 [PubMed 8314572]). Members of this family contain the POU domain, a 160-amino acid region necessary for DNA binding to the octameric sequence ATGCAAAT.
Synonyms:	oct-1B; OCT1; OTF1

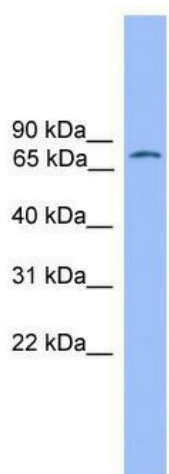


[View online »](#)

Note: Immunogen Sequence Homology: Dog: 100%; Human: 100%; Rabbit: 100%; Pig: 93%; Bovine: 93%; Rat: 86%; Guinea pig: 86%; Zebrafish: 85%; Mouse: 79%

Protein Families: Druggable Genome, Transcription Factors

Product images:



WB Suggested Anti-POU2F1 Antibody Titration:
0.2-1 ug/ml; ELISA Titer: 1: 62500; Positive
Control: THP-1 cell lysate