

Product datasheet for **TA335807**

Oct-2 (POU2F2) Rabbit Polyclonal Antibody

Product data:

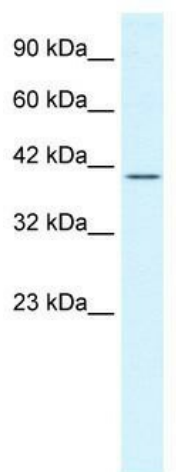
Product Type:	Primary Antibodies
Applications:	WB
Recommended Dilution:	WB
Reactivity:	Human
Host:	Rabbit
Isotype:	IgG
Clonality:	Polyclonal
Immunogen:	The immunogen for Anti-POU2F2 Antibody: synthetic peptide directed towards the N terminal of human POU2F2. Synthetic peptide located within the following region: SPSEHTDTERNGPDTNHQNPQNKTSPFSVSPTGPSTKIKAEPSGDSAPA
Formulation:	Liquid. Purified antibody supplied in 1x PBS buffer with 0.09% (w/v) sodium azide and 2% sucrose. <i>Note that this product is shipped as lyophilized powder to China customers.</i>
Purification:	Protein A purified
Conjugation:	Unconjugated
Storage:	Store at -20°C as received.
Stability:	Stable for 12 months from date of receipt.
Predicted Protein Size:	49 kDa
Gene Name:	POU class 2 homeobox 2
Database Link:	NP_002689 Entrez Gene 5452 Human P09086
Background:	POU2F2 is a member of the POU family and is predominantly expressed in B cells, in activated T cells, and in the nervous system.
Synonyms:	Oct-2; OCT2; OTF2
Note:	Immunogen Sequence Homology: Dog: 100%; Pig: 100%; Rat: 100%; Horse: 100%; Human: 100%; Mouse: 100%; Guinea pig: 100%; Bovine: 93%; Rabbit: 79%



[View online »](#)

Protein Families: Transcription Factors

Product images:



WB Suggested Anti-POU2F2 Antibody Titration:
1.25 ug/ml; ELISA Titer: 1:62500; Positive Control:
HepG2 cell lysate. POU2F2 is supported by
BioGPS gene expression data to be expressed in
HepG2