

Product datasheet for **TA335806**

PP2A-alpha (PPP2CA) Rabbit Polyclonal Antibody

Product data:

Product Type:	Primary Antibodies
Applications:	WB
Recommended Dilution:	WB
Reactivity:	Human, Mouse
Host:	Rabbit
Isotype:	IgG
Clonality:	Polyclonal
Immunogen:	The immunogen for Anti-PPP2CA Antibody is: synthetic peptide directed towards the N-terminal region of Human PPP2CA. Synthetic peptide located within the following region: FHDLMELFRIGGKSPDTNYLFMGDYVDRGYYSVETVTLVALKVRYRERI
Formulation:	Liquid. Purified antibody supplied in 1x PBS buffer with 0.09% (w/v) sodium azide and 2% sucrose. <i>Note that this product is shipped as lyophilized powder to China customers.</i>
Purification:	Affinity Purified
Conjugation:	Unconjugated
Storage:	Store at -20°C as received.
Stability:	Stable for 12 months from date of receipt.
Predicted Protein Size:	28 kDa
Gene Name:	protein phosphatase 2 catalytic subunit alpha
Database Link:	NP_002706 Entrez Gene 19052 Mouse Entrez Gene 5515 Human P67775
Background:	This gene encodes the phosphatase 2A catalytic subunit. Protein phosphatase 2A is one of the four major Ser/Thr phosphatases, and it is implicated in the negative control of cell growth and division. It consists of a common heteromeric core enzyme, which is composed of a catalytic subunit and a constant regulatory subunit, that associates with a variety of regulatory subunits. This gene encodes an alpha isoform of the catalytic subunit.
Synonyms:	PP2Ac; PP2CA; PP2Calpha; RP-C



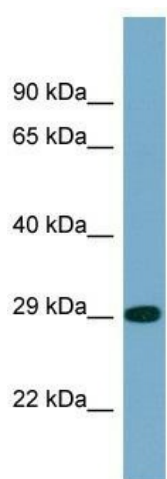
[View online »](#)

Note: Immunogen Sequence Homology: Dog: 100%; Pig: 100%; Rat: 100%; Horse: 100%; Human: 100%; Mouse: 100%; Sheep: 100%; Bovine: 100%; Rabbit: 100%; Zebrafish: 100%; Guinea pig: 100%; Yeast: 93%

Protein Families: Druggable Genome, Phosphatase, Transcription Factors

Protein Pathways: Long-term depression, Oocyte meiosis, TGF-beta signaling pathway, Tight junction, Wnt signaling pathway

Product images:



Host: Rabbit; Target Name: PPP2CA; Sample Tissue: PANC1 Whole cell lysates; Antibody Dilution: 1.0 ug/ml