

## Product datasheet for **TA335805**

### PSMC2 Rabbit Polyclonal Antibody

#### Product data:

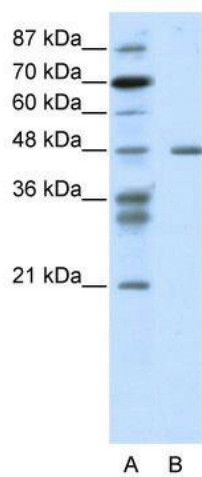
Product Type:	Primary Antibodies
Applications:	WB
Recommended Dilution:	WB
Reactivity:	Human
Host:	Rabbit
Isotype:	IgG
Clonality:	Polyclonal
Immunogen:	The immunogen for Anti-PSMC2 Antibody: synthetic peptide directed towards the N terminal of human PSMC2. Synthetic peptide located within the following region: MPDYLGADQRKTKEVEKDDKPIRALDEGDIALLKTYGQSTYSRQIKQVED
Formulation:	Liquid. Purified antibody supplied in 1x PBS buffer with 0.09% (w/v) sodium azide and 2% sucrose. <i>Note that this product is shipped as lyophilized powder to China customers.</i>
Purification:	Protein A purified
Conjugation:	Unconjugated
Storage:	Store at -20°C as received.
Stability:	Stable for 12 months from date of receipt.
Predicted Protein Size:	49 kDa
Gene Name:	proteasome 26S subunit, ATPase 2
Database Link:	<a href="#">NP_002794</a> <a href="#">Entrez Gene 5701 Human P35998</a>
Background:	PSMC2 is one of the ATPase subunits. This subunit has been shown to interact with several of the basal transcription factors so, in addition to participation in proteasome functions, this subunit may participate in the regulation of transcription. This su
Synonyms:	MSS1; Nbla10058; S7
Note:	Immunogen Sequence Homology: Dog: 100%; Pig: 100%; Rat: 100%; Human: 100%; Mouse: 100%; Bovine: 100%; Rabbit: 100%; Guinea pig: 100%; Horse: 93%; Zebrafish: 93%



[View online »](#)

Protein Pathways: Proteasome

### Product images:



WB Suggested Anti-PSMC2 Antibody Titration:  
1.25 ug/ml; ELISA Titer: 1: 1562500; Positive  
Control: Jurkat cell lysate