

Product datasheet for **TA335803**

PSMC5 Rabbit Polyclonal Antibody

Product data:

Product Type:	Primary Antibodies
Applications:	IHC, IP, WB
Recommended Dilution:	WB, IHC, IP
Reactivity:	Human, Mouse
Host:	Rabbit
Isotype:	IgG
Clonality:	Polyclonal
Immunogen:	The immunogen for Anti-PSMC5 Antibody: synthetic peptide directed towards the C terminal of human PSMC5. Synthetic peptide located within the following region: AEVKGVCTEAGMYALRERRVHVTQEDFEMAVAKVMQKDEKNMSIKKLWK
Formulation:	Liquid. Purified antibody supplied in 1x PBS buffer with 0.09% (w/v) sodium azide and 2% sucrose. <i>Note that this product is shipped as lyophilized powder to China customers.</i>
Purification:	Protein A purified
Conjugation:	Unconjugated
Storage:	Store at -20°C as received.
Stability:	Stable for 12 months from date of receipt.
Predicted Protein Size:	46 kDa
Gene Name:	proteasome 26S subunit, ATPase 5
Database Link:	NP_002796 Entrez Gene 19184 Mouse Entrez Gene 5705 Human P62195



[View online »](#)

Background:

The 26S proteasome is a multicatalytic proteinase complex with a highly ordered structure composed of 2 complexes, a 20S core and a 19S regulator. The 19S regulator is composed of a base, which contains 6 ATPase subunits and 2 non-ATPase subunits, and a lid, which contains up to 10 non-ATPase subunits. PSMC5 is one of the ATPase subunits, a member of the triple-A family of ATPases which have a chaperone-like activity. In addition to participation in proteasome functions, this subunit may participate in transcriptional regulation since it has been shown to interact with the thyroid hormone receptor and retinoid X receptor-alpha.

Synonyms:

p45; S8; SUG; SUG-1; SUG1; TBP10; TRIP1

Note:

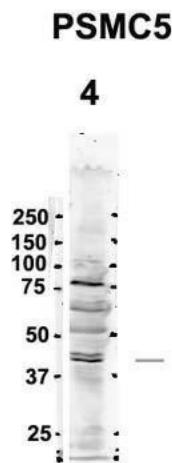
Immunogen Sequence Homology: Pig: 100%; Rat: 100%; Horse: 100%; Human: 100%; Mouse: 100%; Bovine: 100%; Rabbit: 100%; Zebrafish: 100%; Guinea pig: 100%

Protein Families:

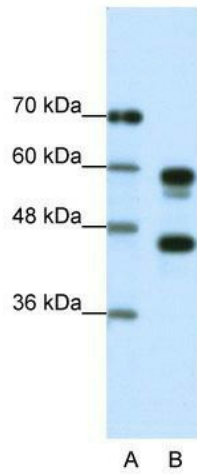
Druggable Genome

Protein Pathways:

Proteasome

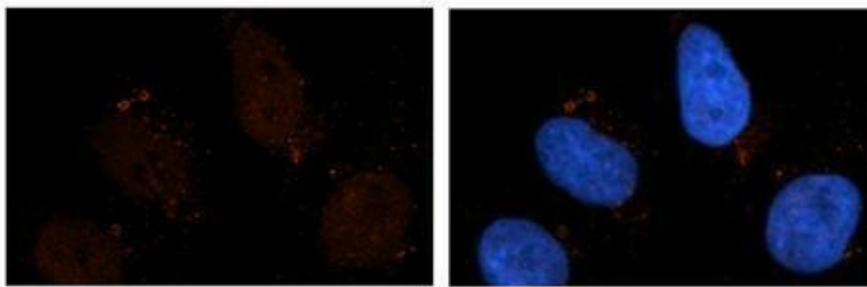
Product images:

Sample Type: 4. rat brain extract (80ug); Primary Antibody Dilution: 2 ug/ml; Secondary Antibody: IRDye 800CW goat anti-rabbit from Li-COR Bioscience; Secondary Antibody Dilution: 1: 20,000; Image Submitted by: Yuzhi Chen; University of Arkansas for Medical Science;



WB Suggested Anti-PSMC5 Antibody Titration:
1.25 ug/ml; ELISA Titer: 1: 312500; Positive
Control: Jurkat cell lysate

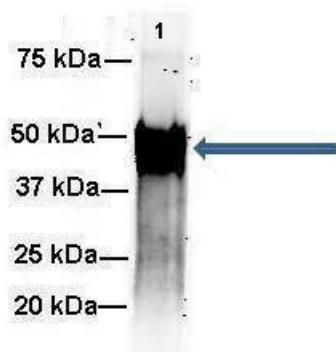
PSMC5



Sample Type: Human brain stem cells Primary
Antibody Dilution: 1: 500; Secondary Antibody:
Goat anti-rabbit Alexa-Fluor 594; Secondary
Antibody: ilution: 1: 1000; Color/Signal
Descriptions: PSMC5: Red DAPI: Blue; Gene
Name: PSMC5; Submitted by: Dr. Yuzhi Chen,
University of Arkansas for Medical Science

Antibody--RED
DAPI--Blue

PSMC5



Amount and Sample Type: 500 ug mouse brain
homogenate; Amount of IP Antibody: 6 ug;
Primary Antibody: PSMC5; Primary Antibody
Dilution: 1: 500; Secondary Antibody: Goat anti-
rabbit Alexa-Fluor 594; Secondary Antibody
Dilution: 1: 5000; Gene Name: PSMC5; Submitted
by: Dr. Yuzhi Chen, University of Arkansas for
Medical Science