

Product datasheet for **TA335797**

RING1 Rabbit Polyclonal Antibody

Product data:

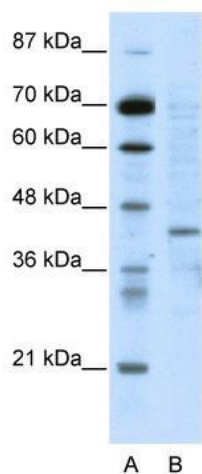
| | |
|--------------------------------|---|
| Product Type: | Primary Antibodies |
| Applications: | WB |
| Recommended Dilution: | WB |
| Reactivity: | Human |
| Host: | Rabbit |
| Isotype: | IgG |
| Clonality: | Polyclonal |
| Immunogen: | The immunogen for Anti-RING1 Antibody: synthetic peptide directed towards the N terminal of human RING1. Synthetic peptide located within the following region: MTTPANAQNASKTWELSLYELHRTPEAIMDGTETIAVSPRSLHSELMCP |
| Formulation: | Liquid. Purified antibody supplied in 1x PBS buffer with 0.09% (w/v) sodium azide and 2% sucrose. <i>Note that this product is shipped as lyophilized powder to China customers.</i> |
| Purification: | Protein A purified |
| Conjugation: | Unconjugated |
| Storage: | Store at -20°C as received. |
| Stability: | Stable for 12 months from date of receipt. |
| Predicted Protein Size: | 42 kDa |
| Gene Name: | ring finger protein 1 |
| Database Link: | NP_002922 Entrez Gene 6015 Human Q06587 |
| Background: | RING1 can bind DNA and can act as a transcriptional repressor. It is associated with the multimeric polycomb group protein complex. The gene product interacts with the polycomb group proteins BMI1, EDR1, and CBX4, and colocalizes with these proteins in la |
| Synonyms: | RING1A; RNF1 |
| Note: | Immunogen Sequence Homology: Dog: 100%; Pig: 100%; Rat: 100%; Horse: 100%; Human: 100%; Mouse: 100%; Bovine: 100%; Guinea pig: 100% |



[View online »](#)

Protein Families: Druggable Genome, Transcription Factors

Product images:



WB Suggested Anti-RING1 Antibody Titration: 5.0 ug/ml; ELISA Titer: 1: 62500; Positive Control: HepG2 cell lysate. RING1 is supported by BioGPS gene expression data to be expressed in HepG2