

Product datasheet for **TA335793**

SMARCA1 Rabbit Polyclonal Antibody

Product data:

Product Type:	Primary Antibodies
Applications:	IHC, WB
Recommended Dilution:	WB, ChIP
Reactivity:	Human
Host:	Rabbit
Isotype:	IgG
Clonality:	Polyclonal
Immunogen:	The immunogen for Anti-SMARCA1 Antibody: synthetic peptide directed towards the N terminal of human SMARCA1. Synthetic peptide located within the following region: EQDTAAVAATVAAADATATIVVIEDEQPGPSTSQEEGAAAAATEATAATE
Formulation:	Liquid. Purified antibody supplied in 1x PBS buffer with 0.09% (w/v) sodium azide and 2% sucrose. <i>Note that this product is shipped as lyophilized powder to China customers.</i>
Purification:	Affinity Purified
Conjugation:	Unconjugated
Storage:	Store at -20°C as received.
Stability:	Stable for 12 months from date of receipt.
Predicted Protein Size:	122 kDa
Gene Name:	SWI/SNF related, matrix associated, actin dependent regulator of chromatin, subfamily a, member 1
Database Link:	NP_003060 Entrez Gene 6594 Human P28370



[View online »](#)

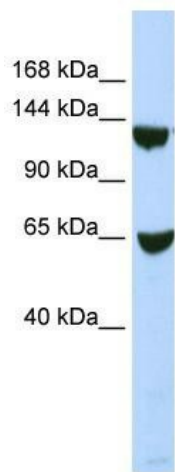
Background: SMARCA1 is a member of the SWI/SNF family of proteins. Members of this family have helicase and ATPase activities and are thought to regulate transcription of certain genes by altering the chromatin structure around those genes. This gene encodes a member of the SWI/SNF family of proteins. Members of this family have helicase and ATPase activities and are thought to regulate transcription of certain genes by altering the chromatin structure around those genes. Alternatively spliced transcript variants encoding different isoforms have been found for this gene.

Synonyms: ISWI; NURF140; SNF2L; SNF2L1; SNF2LB; SNF2LT; SWI; SWI2

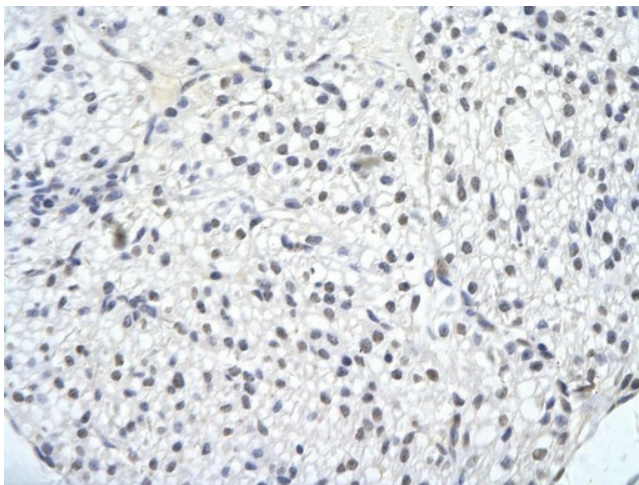
Note: Immunogen Sequence Homology: Human: 100%; Dog: 93%; Horse: 92%; Pig: 86%; Bovine: 86%; Rat: 85%; Mouse: 79%; Rabbit: 77%

Protein Families: Transcription Factors

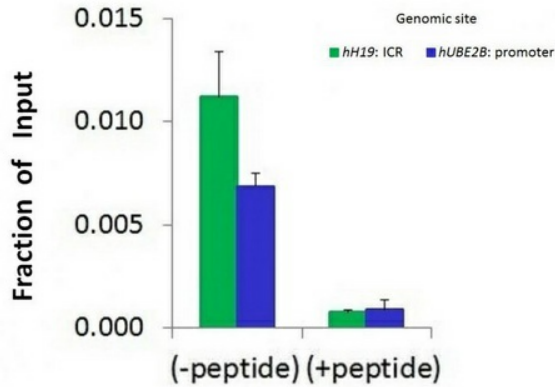
Product images:



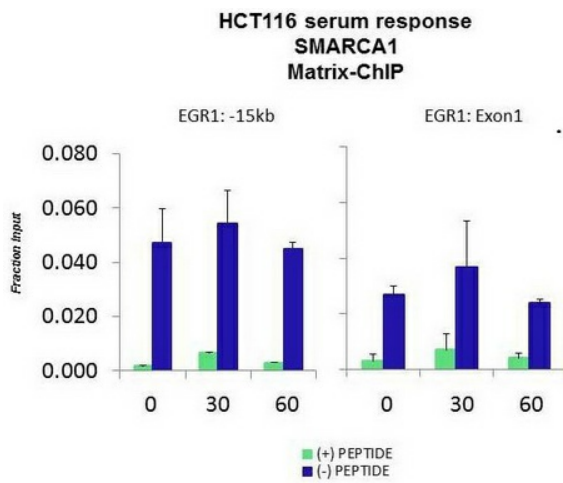
WB Suggested Anti-SMARCA1 Antibody Titration: 0.2-1 ug/ml; ELISA Titer: 1: 62500; Positive Control: 293T cell lysate. SMARCA1 is strongly supported by BioGPS gene expression data to be expressed in Human HEK293T cells



Rabbit Anti-SMARCA1 antibody; Paraffin Embedded Tissue: Human Heart cell; Cellular Data: Epithelial cells of renal tubule; Antibody Concentration: 4.0-8.0 ug/ml; Magnification: 400X



Chromatin Immunoprecipitation (ChIP) Using SMARCA1 antibody - N-terminal region and HCT116 Cells



Quiescent human colon carcinoma HCT116 cultures were treated with 10% FBS for three time points (0, 15, 30min) or (0, 30, 60min) were used in Matrix-ChIP and real-time PCR assays at EGR1 gene (Exon1) and 15kb upstream site.