

## Product datasheet for **TA335791**

### SMARCD2 Rabbit Polyclonal Antibody

#### Product data:

Product Type:	Primary Antibodies
Applications:	IHC, WB
Recommended Dilution:	WB, IHC
Reactivity:	Human
Host:	Rabbit
Isotype:	IgG
Clonality:	Polyclonal
Immunogen:	The immunogen for Anti-SMARCD2 Antibody: synthetic peptide directed towards the C terminal of human SMARCD2. Synthetic peptide located within the following region: STDPQDFIQEWLRSQRRDLKIITDVIGNPEEERRAAFYHQWAEAVGRH
Formulation:	Liquid. Purified antibody supplied in 1x PBS buffer with 0.09% (w/v) sodium azide and 2% sucrose.
Purification:	Affinity Purified
Conjugation:	Unconjugated
Storage:	Store at -20°C as received.
Stability:	Stable for 12 months from date of receipt.
Predicted Protein Size:	54 kDa
Gene Name:	SWI/SNF related, matrix associated, actin dependent regulator of chromatin, subfamily d, member 2
Database Link:	<a href="#">NP_003068</a> <a href="#">Entrez Gene 6603 Human Q92925</a>



[View online »](#)

**Background:**

SMARCD2 is a member of the SWI/SNF family of proteins, whose members display helicase and ATPase activities and which are thought to regulate transcription of certain genes by altering the chromatin structure around those genes. The protein is part of the large ATP-dependent chromatin remodeling complex SNF/SWI and has sequence similarity to the yeast Swp73 protein. The protein encoded by this gene is a member of the SWI/SNF family of proteins, whose members display helicase and ATPase activities and which are thought to regulate transcription of certain genes by altering the chromatin structure around those genes. The encoded protein is part of the large ATP-dependent chromatin remodeling complex SNF/SWI and has sequence similarity to the yeast Swp73 protein.

**Synonyms:**

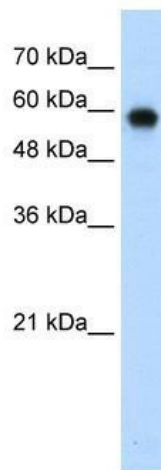
BAF60B; CRACD2; PRO2451; Rsc6p

**Note:**

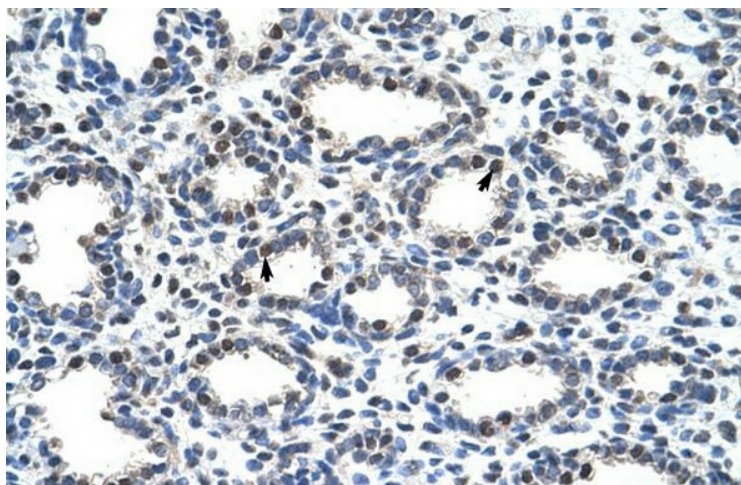
Immunogen Sequence Homology: Dog: 100%; Pig: 100%; Rat: 100%; Horse: 100%; Human: 100%; Mouse: 100%; Bovine: 100%; Rabbit: 100%; Guinea pig: 100%; Zebrafish: 93%

**Protein Families:**

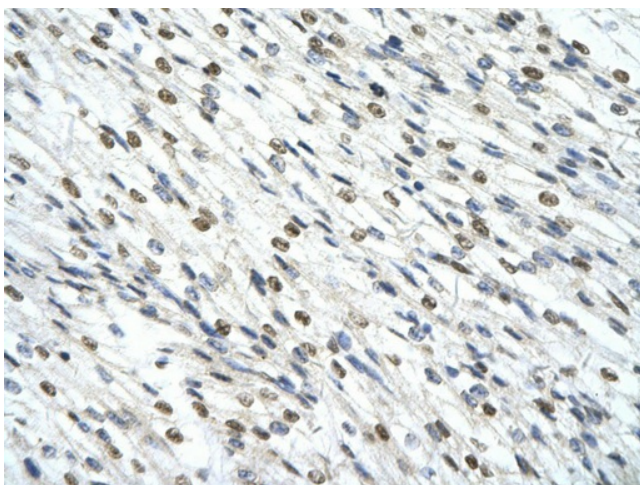
Transcription Factors

**Product images:**

WB Suggested Anti-SMARCD2 Antibody Titration: 0.2-1 ug/ml; Positive Control: Jurkat cell lysate. SMARCD2 is supported by BioGPS gene expression data to be expressed in Jurkat



Rabbit Anti-SMARCD2 Antibody; Paraffin Embedded Tissue: Human Lung; Cellular Data: Alveolar cells; Antibody Concentration: 16 ug/ml; Magnification: 400X



Rabbit Anti-SMARCD2 Antibody; Paraffin Embedded Tissue: Human cardiac cell; Cellular Data: Epithelial cells of renal tubule; Antibody Concentration: 4.0-8.0 ug/ml; Magnification: 400X