

Product datasheet for **TA335786**

Transcription factor Sp4 (SP4) Rabbit Polyclonal Antibody

Product data:

Product Type:	Primary Antibodies
Applications:	IHC, WB
Recommended Dilution:	WB, IHC
Reactivity:	Human
Host:	Rabbit
Isotype:	IgG
Clonality:	Polyclonal
Immunogen:	The immunogen for Anti-SP4 Antibody: synthetic peptide directed towards the middle region of human SP4. Synthetic peptide located within the following region: GGTALAIVTSGELDSSVTEVLGSPRIVTVA AISQDSNPATPNVSTNMEEF
Formulation:	Liquid. Purified antibody supplied in 1x PBS buffer with 0.09% (w/v) sodium azide and 2% sucrose. <i>Note that this product is shipped as lyophilized powder to China customers.</i>
Purification:	Affinity Purified
Conjugation:	Unconjugated
Storage:	Store at -20°C as received.
Stability:	Stable for 12 months from date of receipt.
Predicted Protein Size:	82 kDa
Gene Name:	Sp4 transcription factor
Database Link:	NP_003103 Entrez Gene 6671 Human Q02446
Background:	SP4 belongs to the Sp1 C2H2-type zinc-finger protein family. It contains 3 C2H2-type zinc fingers. SP4 binds to GT and GC boxes promoters elements. It is a probable transcriptional activator.
Synonyms:	HF1B; SPR-1
Note:	Immunogen Sequence Homology: Dog: 100%; Rat: 100%; Horse: 100%; Human: 100%; Mouse: 100%; Bovine: 100%; Rabbit: 100%; Pig: 93%; Guinea pig: 93%



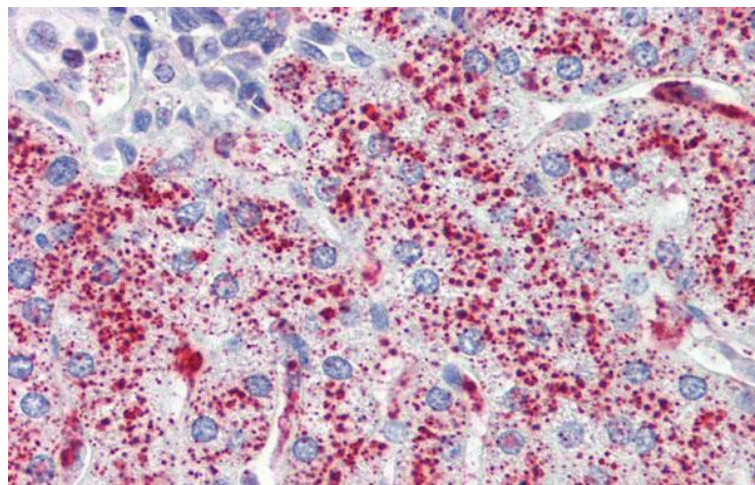
[View online »](#)

Protein Families: Transcription Factors

Product images:



WB Suggested Anti-SP4 Antibody Titration: 0.2-1 ug/ml; ELISA Titer: 1: 1562500; Positive Control: HepG2 cell lysate



Immunohistochemistry with Human Liver cell lysate tissue at an antibody concentration of 5.0 ug/ml using anti-SP4 antibody