

## Product datasheet for **TA335781**

### TRIM21 Rabbit Polyclonal Antibody

#### Product data:

Product Type:	Primary Antibodies
Applications:	WB
Recommended Dilution:	WB
Reactivity:	Human
Host:	Rabbit
Isotype:	IgG
Clonality:	Polyclonal
Immunogen:	The immunogen for Anti-TRIM21 Antibody: synthetic peptide directed towards the N terminal of human TRIM21. Synthetic peptide located within the following region: GELRRKQELAEKLEVEIAIKRADWKKTVETQKSRIHAEFVQQKNFLVEEE
Formulation:	Liquid. Purified antibody supplied in 1x PBS buffer with 0.09% (w/v) sodium azide and 2% sucrose. <i>Note that this product is shipped as lyophilized powder to China customers.</i>
Purification:	Affinity Purified
Conjugation:	Unconjugated
Storage:	Store at -20°C as received.
Stability:	Stable for 12 months from date of receipt.
Predicted Protein Size:	54 kDa
Gene Name:	tripartite motif containing 21
Database Link:	<a href="#">NP_003132</a> <a href="#">Entrez Gene 6737 Human P19474</a>



[View online »](#)

**Background:**

TRIM21 is a member of the tripartite motif (TRIM) family. The TRIM motif includes three zinc-binding domains, a RING, a B-box type 1 and a B-box type 2, and a coiled-coil region. TRIM21 is part of the RoSSA ribonucleoprotein, which includes a single polypeptide and one of four small RNA molecules. The RoSSA particle localizes to both the cytoplasm and the nucleus. RoSSA interacts with autoantigens in patients with Sjogren syndrome and systemic lupus erythematosus. This gene encodes a member of the tripartite motif (TRIM) family. The TRIM motif includes three zinc-binding domains, a RING, a B-box type 1 and a B-box type 2, and a coiled-coil region. The encoded protein is part of the RoSSA ribonucleoprotein, which includes a single polypeptide and one of four small RNA molecules. The RoSSA particle localizes to both the cytoplasm and the nucleus. RoSSA interacts with autoantigens in patients with Sjogren syndrome and systemic lupus erythematosus. Alternatively spliced transcript variants for this gene have been described but the full-length nature of only one has been determined. Publication Note: This RefSeq record includes a subset of the publications that are available for this gene. Please see the Entrez Gene record to access additional publications.

**Synonyms:**

RNF81; Ro; RO52; SSA; SSA1

**Note:**

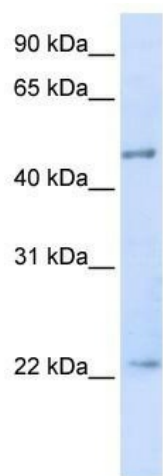
Immunogen Sequence Homology: Human: 100%; Pig: 92%; Guinea pig: 92%; Rat: 85%; Rabbit: 85%; Mouse: 83%; Dog: 77%

**Protein Families:**

Druggable Genome

**Protein Pathways:**

Systemic lupus erythematosus

**Product images:**

WB Suggested Anti-TRIM21 Antibody Titration:  
0.2-1 ug/ml; ELISA Titer: 1:62500; Positive Control:  
Transfected 293T

# TRIM21

