

Product datasheet for **TA335775**

Zyxin (ZYX) Rabbit Polyclonal Antibody

Product data:

Product Type:	Primary Antibodies
Applications:	WB
Recommended Dilution:	WB
Reactivity:	Human
Host:	Rabbit
Isotype:	IgG
Clonality:	Polyclonal
Immunogen:	The immunogen for Anti-ZYX Antibody: synthetic peptide directed towards the middle region of human ZYX. Synthetic peptide located within the following region: GSPQPPSFTYAQQREKPRVQEKQHPVPPPAQNQNQVRSPGAPGPLTLKEV
Formulation:	Liquid. Purified antibody supplied in 1x PBS buffer with 0.09% (w/v) sodium azide and 2% sucrose. <i>Note that this product is shipped as lyophilized powder to China customers.</i>
Purification:	Protein A purified
Conjugation:	Unconjugated
Storage:	Store at -20°C as received.
Stability:	Stable for 12 months from date of receipt.
Predicted Protein Size:	61 kDa
Gene Name:	zyxin
Database Link:	NP_003452 Entrez Gene 7791 Human Q15942
Background:	Focal adhesions are actin-rich structures that enable cells to adhere to the extracellular matrix and at which protein complexes involved in signal transduction assemble. Zyxin is a zinc-binding phosphoprotein that concentrates at focal adhesions and along the actin cytoskeleton. Zyxin may function as a messenger in the signal transduction pathway that mediates adhesion-stimulated changes in gene expression and may modulate the cytoskeletal organization of actin bundles.



[View online »](#)

Synonyms: ESP-2; HED-2

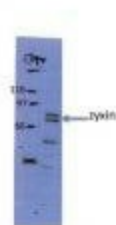
Note: Immunogen Sequence Homology: Horse: 100%; Human: 100%; Dog: 92%; Pig: 92%; Rabbit: 92%; Guinea pig: 92%; Rat: 91%; Mouse: 85%; Bovine: 85%

Protein Pathways: Focal adhesion

Product images:



WB Suggested Anti-ZYX Antibody Titration: 1.25 ug/ml; ELISA Titer: 1:62500; Positive Control: Jurkat cell lysate



Sample Type: HeLa whole cell lysate
 Primary Dilution: 1:200
 ZYX is strongly supported by BioGPS gene expression data to be expressed in Human HeLa cells