

## Product datasheet for **TA335773**

### DNALI1 Rabbit Polyclonal Antibody

#### Product data:

Product Type:	Primary Antibodies
Applications:	IF, WB
Recommended Dilution:	WB, IF
Reactivity:	Human
Host:	Rabbit
Isotype:	IgG
Clonality:	Polyclonal
Immunogen:	The immunogen for Anti-DNALI1 Antibody: synthetic peptide directed towards the N terminal of human DNALI1. Synthetic peptide located within the following region: MVTANKAHTGQGSCWVATLASAMIPPADSLLKYDTPVLVSRNTEKRSPKA
Formulation:	Liquid. Purified antibody supplied in 1x PBS buffer with 0.09% (w/v) sodium azide and 2% sucrose. <i>Note that this product is shipped as lyophilized powder to China customers.</i>
Purification:	Affinity Purified
Conjugation:	Unconjugated
Storage:	Store at -20°C as received.
Stability:	Stable for 12 months from date of receipt.
Predicted Protein Size:	31 kDa
Gene Name:	dynein axonemal light intermediate chain 1
Database Link:	<a href="#">NP_003453</a> <a href="#">Entrez Gene 7802 Human</a> <a href="#">O14645</a>



[View online »](#)

**Background:**

DNALI1 is the human homolog of the Chlamydomonas inner dynein arm gene, p28. The precise function of this gene is not known, however, it is a potential candidate for immotile cilia syndrome (ICS). Ultrastructural defects of the inner dynein arms are seen in patients with ICS. Immotile mutant strains of Chlamydomonas, a biflagellated algae, exhibit similar defects. This gene is the human homolog of the Chlamydomonas inner dynein arm gene, p28. The precise function of this gene is not known, however, it is a potential candidate for immotile cilia syndrome (ICS). Ultrastructural defects of the inner dynein arms are seen in patients with ICS. Immotile mutant strains of Chlamydomonas, a biflagellated algae, exhibit similar defects.

**Synonyms:**

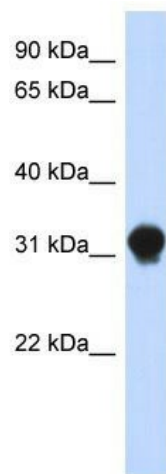
dj423B22.5; hp28; P28

**Note:**

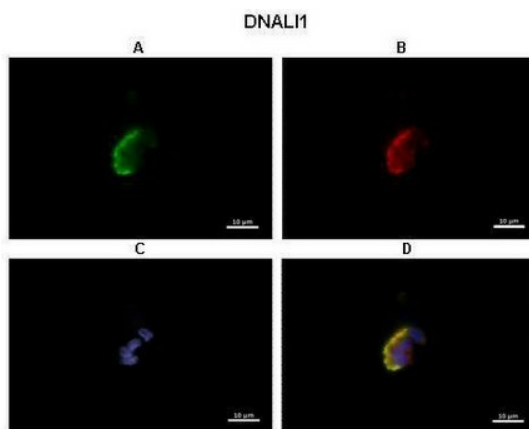
Immunogen Sequence Homology: Dog: 100%; Pig: 100%; Rat: 100%; Horse: 100%; Human: 100%; Mouse: 100%; Bovine: 100%; Rabbit: 100%; Guinea pig: 100%

**Protein Pathways:**

Huntington's disease

**Product images:**


WB Suggested Anti-DNALI1 Antibody Titration:  
0.2-1 ug/ml; ELISA Titer: 1: 62500; Positive Control: Transfected 293T



A: Acetylated alpha-tubulin @1:10,000  
B: DNALI1 @1:1000 (ARP53611)  
C: DAPI  
D: Merge

Application: IHC; Species+tissue/cell type: Human nasal epithelial cells; Primary antibody dilution: 1: 1000; Secondary antibody: Goat anti-rabbit Alexa Fluor 546; Secondary antibody dilution: 1: 1000 - See more at: <http://www.avivasysbio.com/dnali1-antibody-n-terminal-region-arp53611-p050.html#sthash.SFTiXW2a.dpuf>