

Product datasheet for **TA335772**

RASSF7 Rabbit Polyclonal Antibody

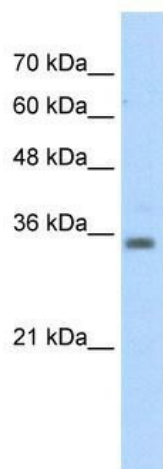
Product data:

Product Type:	Primary Antibodies
Applications:	IHC, WB
Recommended Dilution:	WB, IHC
Reactivity:	Human
Host:	Rabbit
Isotype:	IgG
Clonality:	Polyclonal
Immunogen:	The immunogen for Anti-RASSF7 Antibody: synthetic peptide directed towards the middle region of human RASSF7. Synthetic peptide located within the following region: RVQRNAEELGHEAFWEQELRREQAREREGQARLQALSAATAEHAARLQAL
Formulation:	Liquid. Purified antibody supplied in 1x PBS buffer with 0.09% (w/v) sodium azide and 2% sucrose. <i>Note that this product is shipped as lyophilized powder to China customers.</i>
Purification:	Protein A purified
Conjugation:	Unconjugated
Storage:	Store at -20°C as received.
Stability:	Stable for 12 months from date of receipt.
Predicted Protein Size:	40 kDa
Gene Name:	Ras association domain family member 7
Database Link:	NP_003466 Entrez Gene 8045 Human Q02833
Background:	The function remains unknown.
Synonyms:	C11orf13; HRAS1; HRC1
Note:	Immunogen Sequence Homology: Dog: 100%; Pig: 100%; Rat: 100%; Horse: 100%; Human: 100%; Mouse: 100%; Bovine: 93%; Guinea pig: 93%

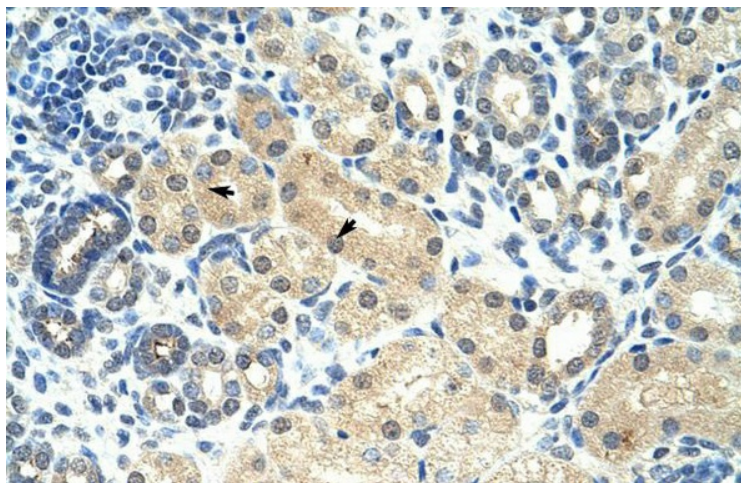


[View online »](#)

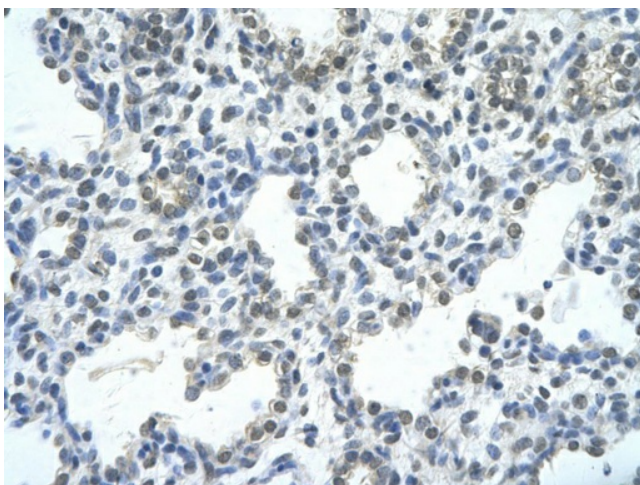
Product images:



WB Suggested Anti-RASSF7 Antibody Titration: 5.0 ug/ml; Positive Control: Jurkat cell lysate



Human kidney



Rabbit Anti-RASSF7 Antibody; Paraffin Embedded
Tissue: Human alveolar cell; Cellular Data:
Epithelial cells of renal tubule; Antibody
Concentration: 4.0-8.0 ug/ml; Magnification: 400X