

## Product datasheet for **TA335770**

### CSRP3 Rabbit Polyclonal Antibody

#### Product data:

Product Type:	Primary Antibodies
Applications:	WB
Recommended Dilution:	WB
Reactivity:	Human
Host:	Rabbit
Isotype:	IgG
Clonality:	Polyclonal
Immunogen:	The immunogen for Anti-CSRP3 Antibody: synthetic peptide directed towards the C terminal of human CSRP3. Synthetic peptide located within the following region: FRCAICGKSLESTNVTDKDGELYCKVCYAKNFGPTGIGFGGLTQQVEKKE
Formulation:	Liquid. Purified antibody supplied in 1x PBS buffer with 0.09% (w/v) sodium azide and 2% sucrose. <i>Note that this product is shipped as lyophilized powder to China customers.</i>
Purification:	Affinity Purified
Conjugation:	Unconjugated
Storage:	Store at -20°C as received.
Stability:	Stable for 12 months from date of receipt.
Predicted Protein Size:	21 kDa
Gene Name:	cysteine and glycine rich protein 3
Database Link:	<a href="#">NP_003467</a> <a href="#">Entrez Gene 8048 Human</a> <a href="#">P50461</a>
Background:	This CSRP3 gene encodes a member of the CSRP family of LIM domain proteins, which may be involved in regulatory processes important for development and cellular differentiation. The LIM/double zinc-finger motif found in this protein is found in a group of proteins with critical functions in gene regulation, cell growth, and somatic differentiation. Mutations in this gene are thought to cause heritable forms of hypertrophic cardiomyopathy (HCM) and dilated cardiomyopathy (DCM) in humans.

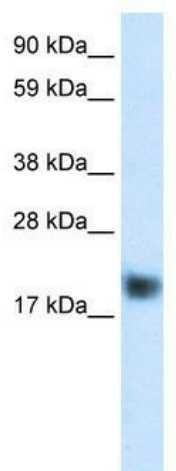


[View online »](#)

**Synonyms:** CLP; CMD1M; CMH12; CRP3; LMO4; MLP

**Note:** Immunogen Sequence Homology: Dog: 100%; Human: 100%; Mouse: 100%; Rabbit: 100%; Pig: 93%; Rat: 93%; Horse: 93%; Bovine: 93%; Guinea pig: 93%

**Product images:**



WB Suggested Anti-CSRP3 Antibody Titration:  
0.125 ug/ml; Positive Control: Human muscle