

## Product datasheet for **TA335763**

### **FAM193A Rabbit Polyclonal Antibody**

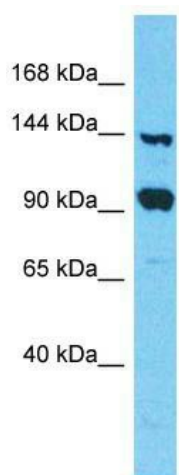
#### **Product data:**

|                         |   |
|-------------------------|---|
| Product Type:           | Primary Antibodies  |
| Applications:           | WB  |
| Recommended Dilution:   | WB  |
| Reactivity:             | Human   |
| Host:                   | Rabbit  |
| Isotype:                | IgG   |
| Clonality:              | Polyclonal  |
| Immunogen:              | The immunogen for Anti-FAM193A Antibody is: synthetic peptide directed towards the C-terminal region of Human FAM193A. Synthetic peptide located within the following region: EHQQNSKLVLAESPQPKGKNKKKKGGDRVNNNSIDGVSLLLPSLGYNCA |
| Formulation:            | Liquid. Purified antibody supplied in 1x PBS buffer with 0.09% (w/v) sodium azide and 2% sucrose.   |
| Purification:           | Affinity Purified   |
| Conjugation:            | Unconjugated  |
| Storage:                | Store at -20°C as received.   |
| Stability:              | Stable for 12 months from date of receipt.  |
| Predicted Protein Size: | 139 kDa   |
| Gene Name:              | family with sequence similarity 193 member A  |
| Database Link:          | <a href="#">NP_003695</a><br><a href="#">Entrez Gene 8603 Human</a><br><a href="#">P78312</a>   |
| Background:             | The function of this protein remains unknown.   |
| Synonyms:               | C4orf8; RES4-22   |
| Note:                   | Immunogen Sequence Homology: Human: 100%; Rat: 93%; Horse: 93%; Mouse: 93%; Dog: 85%; Zebrafish: 85%; Pig: 79%; Guinea pig: 79%   |



[View online »](#)

## Product images:



Host: Rabbit; Target Name: FAM193A; Sample  
Tissue: 293T Whole Cell lysates; Antibody  
Dilution: 1.0 ug/ml. IFAM193A is supported by  
BioGPS gene expression data to be expressed in  
HEK293T