

Product datasheet for **TA335762**

ADAM7 Rabbit Polyclonal Antibody

Product data:

Product Type:	Primary Antibodies
Applications:	WB
Recommended Dilution:	WB
Reactivity:	Human
Host:	Rabbit
Isotype:	IgG
Clonality:	Polyclonal
Immunogen:	The immunogen for Anti-ADAM7 Antibody: synthetic peptide directed towards the C terminal of human ADAM7. Synthetic peptide located within the following region: PTETLGVENKGYFGDEQQIRTEPILPEIHFLNKPASKDSRGIADPNQSAK
Formulation:	Liquid. Purified antibody supplied in 1x PBS buffer with 0.09% (w/v) sodium azide and 2% sucrose.
Purification:	Affinity Purified
Conjugation:	Unconjugated
Storage:	Store at -20°C as received.
Stability:	Stable for 12 months from date of receipt.
Predicted Protein Size:	83 kDa
Gene Name:	ADAM metallopeptidase domain 7
Database Link:	NP_003808 Entrez Gene 8756 Human Q9H2U9



[View online »](#)

Background:

The ADAM family is composed of zinc-binding proteins that can function as adhesion proteins and/or endopeptidases. They are involved in a number of biologic processes, including fertilization, neurogenesis, muscle development, and immune response. The ADAM family is composed of zinc-binding proteins that can function as adhesion proteins and/or endopeptidases. They are involved in a number of biologic processes, including fertilization, neurogenesis, muscle development, and immune response. [supplied by OMIM].
PRIMARYREFSEQ_SPAN PRIMARY_IDENTIFIER PRIMARY_SPAN COMP 1-30 DB077360.1 5-34 31-396 AF215824.1 2-367 397-692 BC058037.1 466-761 693-1666 AF215824.1 664-1637 1667-2321 BC043207.2 1000-1654 2322-2612 AF215824.1 2293-2583

Synonyms:

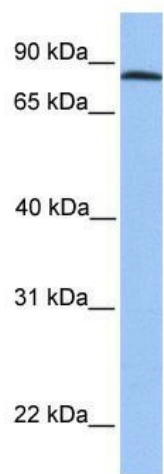
ADAM-7; ADAM 7; EAPI; GP-83; GP83

Note:

Immunogen Sequence Homology: Human: 100%; Mouse: 91%; Dog: 86%; Horse: 85%

Protein Families:

Druggable Genome, Transmembrane

Product images:

WB Suggested Anti-ADAM7 Antibody Titration:
0.2-1 ug/ml; Positive Control: HeLa cell lysate