

Product datasheet for **TA335761**

TIMELESS Rabbit Polyclonal Antibody

Product data:

Product Type:	Primary Antibodies
Applications:	IHC, WB
Recommended Dilution:	WB, IHC
Reactivity:	Human
Host:	Rabbit
Isotype:	IgG
Clonality:	Polyclonal
Immunogen:	The immunogen for Anti-TIMELESS Antibody: synthetic peptide directed towards the N terminal of human TIMELESS. Synthetic peptide located within the following region: IGERDLIFHKGLHNLARNYSSDLGKQPKKVPKRRQAARELSIQRRSALNVR
Formulation:	Liquid. Purified antibody supplied in 1x PBS buffer with 0.09% (w/v) sodium azide and 2% sucrose.
Purification:	Affinity Purified
Conjugation:	Unconjugated
Storage:	Store at -20°C as received.
Stability:	Stable for 12 months from date of receipt.
Predicted Protein Size:	139 kDa
Gene Name:	timeless circadian clock
Database Link:	NP_003911 Entrez Gene 8914 Human Q9UNS1
Background:	The human Timeless protein interacts with both the circadian clock protein cryptochrome 2 and with the cell cycle checkpoint proteins Chk1 and the ATR-ATRIP complex and plays an important role in the DNA damage checkpoint response. Down-regulation of Timeless in human cells seriously compromises replication and intra-S checkpoints, indicating an intimate connection between the circadian cycle and the DNA damage checkpoints that is in part mediated by the Timeless protein.
Synonyms:	hTIM; TIM; TIM1

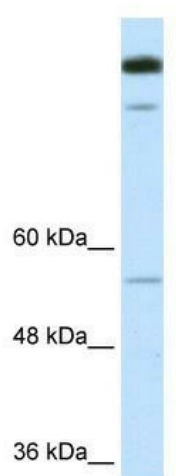


[View online »](#)

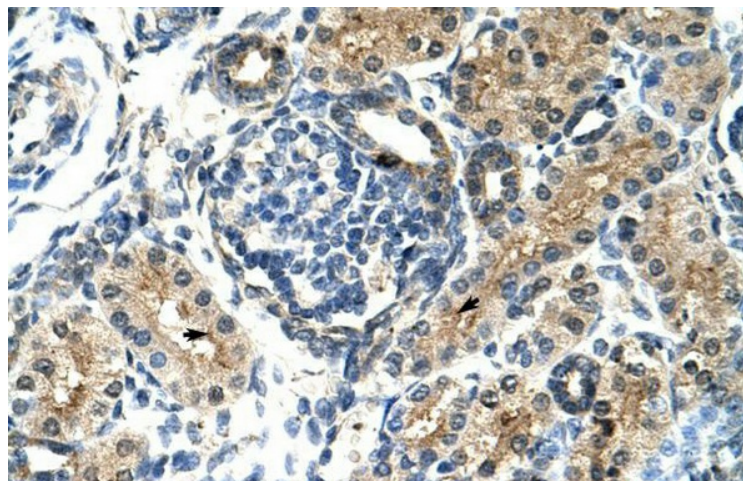
Note: Immunogen Sequence Homology: Human: 100%; Bovine: 92%; Dog: 85%; Pig: 85%; Rat: 85%; Horse: 85%; Mouse: 85%; Sheep: 77%; Rabbit: 77%; Guinea pig: 77%

Protein Families: Transcription Factors

Product images:



WB Suggested Anti-TIMELESS Antibody Titration:
0.2-1 ug/ml; ELISA Titer: 1:312500; Positive
Control: Transfected 293T



Human kidney