

## Product datasheet for **TA335760**

### CSRP1 Rabbit Polyclonal Antibody

#### Product data:

Product Type:	Primary Antibodies
Applications:	WB
Recommended Dilution:	WB
Reactivity:	Human
Host:	Rabbit
Isotype:	IgG
Clonality:	Polyclonal
Immunogen:	The immunogen for Anti-CSRP1 Antibody: synthetic peptide directed towards the middle region of human CSRP1. Synthetic peptide located within the following region: YGYGQGAGTLSTDKGESLGIKHEEAPGHRPTTNPASKFAQKIGGSERCP
Formulation:	Liquid. Purified antibody supplied in 1x PBS buffer with 0.09% (w/v) sodium azide and 2% sucrose. <i>Note that this product is shipped as lyophilized powder to China customers.</i>
Purification:	Affinity Purified
Conjugation:	Unconjugated
Storage:	Store at -20°C as received.
Stability:	Stable for 12 months from date of receipt.
Predicted Protein Size:	20 kDa
Gene Name:	cysteine and glycine rich protein 1
Database Link:	<a href="#">NP_004069</a> <a href="#">Entrez Gene 1465 Human</a> <a href="#">P21291</a>



[View online »](#)

**Background:**

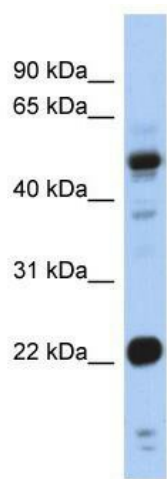
CSRP1 is a member of the cysteine-rich protein (CSRP) family. This gene family includes a group of LIM domain proteins, which may be involved in regulatory processes important for development and cellular differentiation. The LIM/double zinc-finger motif found in this gene product occurs in proteins with critical functions in gene regulation, cell growth, and somatic differentiation. CSRP1 is a member of the CSRP family of genes encoding a group of LIM domain proteins, which may be involved in regulatory processes important for development and cellular differentiation. The LIM/double zinc-finger motif found in CRP1 is found in a group of proteins with critical functions in gene regulation, cell growth, and somatic differentiation. Other genes in the family include CSRP2 and CSRP3. Publication Note: This RefSeq record includes a subset of the publications that are available for this gene. Please see the Entrez Gene record to access additional publications.

**Synonyms:**

CRP; CRP1; CSRP; CYRP; D1S181E; HEL-141

**Note:**

Immunogen Sequence Homology: Dog: 100%; Pig: 100%; Rat: 100%; Human: 100%; Mouse: 100%; Rabbit: 100%; Guinea pig: 100%; Horse: 93%; Bovine: 92%; Zebrafish: 83%

**Product images:**

WB Suggested Anti-CSRP1 Antibody Titration: 0.2-1 ug/ml; ELISA Titer: 1:312500; Positive Control: Human Stomach