

Product datasheet for **TA335759**

TRIP15 (COPS2) Rabbit Polyclonal Antibody

Product data:

Product Type:	Primary Antibodies
Applications:	WB
Recommended Dilution:	WB
Reactivity:	Mouse, Human
Host:	Rabbit
Isotype:	IgG
Clonality:	Polyclonal
Immunogen:	The immunogen for Anti-COPS2 Antibody: synthetic peptide directed towards the N terminal of human COPS2. Synthetic peptide located within the following region: MSDMEDDFMCDDEEDYDLEYSEDSNSEPNVDLENQYNSKALKEDDPKAA
Formulation:	Liquid. Purified antibody supplied in 1x PBS buffer with 0.09% (w/v) sodium azide and 2% sucrose. <i>Note that this product is shipped as lyophilized powder to China customers.</i>
Purification:	Protein A purified
Conjugation:	Unconjugated
Storage:	Store at -20°C as received.
Stability:	Stable for 12 months from date of receipt.
Predicted Protein Size:	52 kDa
Gene Name:	COP9 signalosome subunit 2
Database Link:	NP_004227 Entrez Gene 12848 Mouse Entrez Gene 9318 Human P61201



[View online »](#)

Background: COPS2 is an essential component of the COP9 signalosome complex (CSN), a complex involved in various cellular and developmental processes. The CSN complex is an essential regulator of the ubiquitin (Ubl) conjugation pathway by mediating the deneddylation of the cullin subunits of SCF-type E3 ligase complexes. The complex is also involved in phosphorylation of p53/TP53, c-jun/JUN, IkappaBalpha/NFKBIA, ITPK1 and IRF8/Ion ChannelSBP. COPS2 is also involved in early stage of neuronal differentiation via its interaction with NIF3L1.

Synonyms: ALIEN; CSN2; SGN2; TRIP15

Note: Immunogen Sequence Homology: Dog: 100%; Pig: 100%; Rat: 100%; Horse: 100%; Human: 100%; Mouse: 100%; Bovine: 100%; Rabbit: 100%; Zebrafish: 100%; Guinea pig: 100%; Goat: 91%; Yeast: 86%

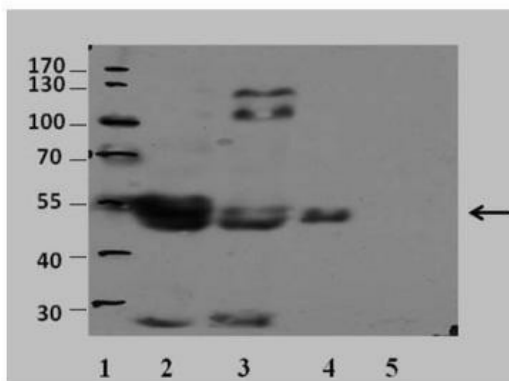
Protein Families: Druggable Genome, Transcription Factors

Product images:



WB Suggested Anti-COPS2 Antibody Titration: 0.5 ug/ml; ELISA Titer: 1:62500; Positive Control: Jurkat cell lysate

COPS2



Sample Type: 1. Markers; 2. B8 mouse fibroblast cells, extraction only; 3. Human total cell extract; 4. Human blood cells, partially purified; 5. Pombe, extraction only; Primary Dilution: 1:200; Secondary Anitbody: HRP conjugated anti-rabbit; Image Submitted By: Dr. Elah Pick; University of Haifa at Oranim