

Product datasheet for **TA335758**

TRIP15 (COPS2) Rabbit Polyclonal Antibody

Product data:

Product Type:	Primary Antibodies
Applications:	WB
Recommended Dilution:	WB
Reactivity:	Human
Host:	Rabbit
Isotype:	IgG
Clonality:	Polyclonal
Immunogen:	The immunogen for Anti-COPS2 Antibody: synthetic peptide directed towards the N terminal of human COPS2. Synthetic peptide located within the following region: MSDMEDDFMCDDEEDYDLEYSNSENPNVDLENQYYNSKALKEDDPKAA
Formulation:	Liquid. Purified antibody supplied in 1x PBS buffer with 0.09% (w/v) sodium azide and 2% sucrose. <i>Note that this product is shipped as lyophilized powder to China customers.</i>
Purification:	Affinity Purified
Conjugation:	Unconjugated
Storage:	Store at -20°C as received.
Stability:	Stable for 12 months from date of receipt.
Predicted Protein Size:	51 kDa
Gene Name:	COP9 signalosome subunit 2
Database Link:	NP_004227 Entrez Gene 9318 Human P61201
Background:	COPS2 is an essential component of the COP9 signalosome complex (CSN), a complex involved in various cellular and developmental processes. The CSN complex is an essential regulator of the ubiquitin (Ubl) conjugation pathway by mediating the deneddylation of the cullin subunits of SCF-type E3 ligase complexes. The complex is also involved in phosphorylation of p53/TP53, c-jun/JUN, IκappaBα/NFKBIA, ITPK1 and IRF8/ICSBP. COPS2 is also involved in early stage of neuronal differentiation via its interaction with NIF3L1.



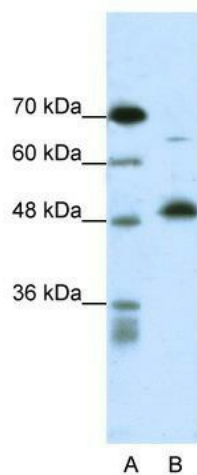
[View online »](#)

Synonyms: ALIEN; CSN2; SGN2; TRIP15

Note: Immunogen Sequence Homology: Dog: 100%; Pig: 100%; Rat: 100%; Horse: 100%; Human: 100%; Mouse: 100%; Bovine: 100%; Rabbit: 100%; Zebrafish: 100%; Guinea pig: 100%; Goat: 91%; Yeast: 86%

Protein Families: Druggable Genome, Transcription Factors

Product images:



WB Suggested Anti-COPS2 Antibody; Titration: 0.5 ug/ml; Positive Control: Fetal Liver