

## Product datasheet for **TA335757**

### TRIP15 (COPS2) Rabbit Polyclonal Antibody

#### Product data:

Product Type:	Primary Antibodies
Applications:	WB
Recommended Dilution:	WB
Reactivity:	Human
Host:	Rabbit
Isotype:	IgG
Clonality:	Polyclonal
Immunogen:	The immunogen for Anti-COPS2 Antibody: synthetic peptide directed towards the N terminal of human COPS2. Synthetic peptide located within the following region: SDMEDDFMCDDEEDYDLEYSSEDSNSEPNVDLENQYYNSKALKEDDPKAAL
Formulation:	Liquid. Purified antibody supplied in 1x PBS buffer with 0.09% (w/v) sodium azide and 2% sucrose. <i>Note that this product is shipped as lyophilized powder to China customers.</i>
Purification:	Affinity Purified
Conjugation:	Unconjugated
Storage:	Store at -20°C as received.
Stability:	Stable for 12 months from date of receipt.
Predicted Protein Size:	52 kDa
Gene Name:	COP9 signalosome subunit 2
Database Link:	<a href="#">NP_004227</a> <a href="#">Entrez Gene 9318 Human P61201</a>



[View online »](#)

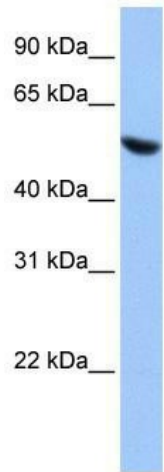
**Background:** COPS2 is an essential component of the COP9 signalosome complex (CSN). The CSN complex is an essential regulator of the ubiquitin (Ubl) conjugation pathway by mediating the deneddylation of the cullin subunits of SCF-type E3 ligase complexes, leading to decrease the Ubl ligase activity of SCF-type complexes such as SCF, CSA or DDB2. The complex is also involved in phosphorylation of p53/TP53, c-jun/JUN, I $\kappa$ B $\alpha$ /NFKBIA, ITPK1 and IRF8/ICSBP, possibly via its association with CK2 and PKD kinases. CSN-dependent phosphorylation of TP53 and JUN promotes and protects degradation by the Ubl system, respectively. COPS2 is involved in early stage of neuronal differentiation via its interaction with NIF3L1.

**Synonyms:** ALIEN; CSN2; SGN2; TRIP15

**Note:** Immunogen Sequence Homology: Dog: 100%; Pig: 100%; Rat: 100%; Horse: 100%; Human: 100%; Mouse: 100%; Bovine: 100%; Rabbit: 100%; Zebrafish: 100%; Guinea pig: 100%; Yeast: 85%

**Protein Families:** Druggable Genome, Transcription Factors

### Product images:



WB Suggested Anti-COPS2 Antibody Titration: 0.2-1  $\mu$ g/ml; ELISA Titer: 1:62500; Positive Control: HepG2 cell lysate