

Product datasheet for **TA335755**

Cip4 (TRIP10) Rabbit Polyclonal Antibody

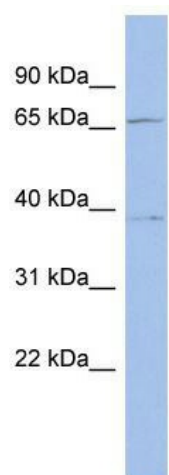
Product data:

Product Type:	Primary Antibodies
Applications:	WB
Recommended Dilution:	WB
Reactivity:	Human
Host:	Rabbit
Isotype:	IgG
Clonality:	Polyclonal
Immunogen:	The immunogen for Anti-TRIP10 Antibody: synthetic peptide directed towards the N terminal of human TRIP10. Synthetic peptide located within the following region: QEMKQERKMHFQEGRRRAQQLENGFKQLENSKRKFERDCREAEKAAQTAE
Formulation:	Liquid. Purified antibody supplied in 1x PBS buffer with 0.09% (w/v) sodium azide and 2% sucrose.
Purification:	Affinity Purified
Conjugation:	Unconjugated
Storage:	Store at -20°C as received.
Stability:	Stable for 12 months from date of receipt.
Predicted Protein Size:	62 kDa
Gene Name:	thyroid hormone receptor interactor 10
Database Link:	NP_004231 Entrez Gene 9322 Human Q15642
Background:	TRIP10 is in FNBP1 family of proteins.
Synonyms:	CIP4; HSTP; STOT; STP; TRIP-10
Note:	Immunogen Sequence Homology: Pig: 100%; Rat: 100%; Human: 100%; Mouse: 100%; Guinea pig: 100%; Dog: 93%; Horse: 93%; Bovine: 93%
Protein Families:	Druggable Genome
Protein Pathways:	Insulin signaling pathway



[View online »](#)

Product images:



WB Suggested Anti-TRIP10 Antibody Titration:
0.2-1 ug/ml; ELISA Titer: 1:12500; Positive Control:
Human Stomach