

## Product datasheet for TA335754

### EFTUD2 Rabbit Polyclonal Antibody

#### Product data:

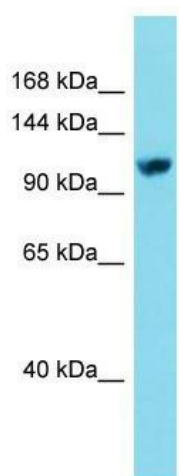
Product Type:	Primary Antibodies
Applications:	WB
Recommended Dilution:	WB
Reactivity:	Human
Host:	Rabbit
Isotype:	IgG
Clonality:	Polyclonal
Immunogen:	The immunogen for Anti-EFTUD2 Antibody is: synthetic peptide directed towards the middle region of Human EFTUD2. Synthetic peptide located within the following region: ADTFGDINYQEFAKRLWGDIYFNPKTRKFTKKAPTSSSQRSFVEFILEPL
Formulation:	Liquid. Purified antibody supplied in 1x PBS buffer with 0.09% (w/v) sodium azide and 2% sucrose. <i>Note that this product is shipped as lyophilized powder to China customers.</i>
Purification:	Affinity Purified
Conjugation:	Unconjugated
Storage:	Store at -20°C as received.
Stability:	Stable for 12 months from date of receipt.
Predicted Protein Size:	109 kDa
Gene Name:	elongation factor Tu GTP binding domain containing 2
Database Link:	<a href="#">NP_004238</a> <a href="#">Entrez Gene 9343 Human Q15029</a>
Background:	This gene encodes a GTPase which is a component of the spliceosome complex which processes precursor mRNAs to produce mature mRNAs. Mutations in this gene are associated with mandibulofacial dysostosis with microcephaly.
Synonyms:	MFDGA; MFDM; SNRNP116; Snrp116; Snu114; U5-116KD
Note:	Immunogen Sequence Homology: Dog: 100%; Pig: 100%; Rat: 100%; Horse: 100%; Human: 100%; Bovine: 100%; Rabbit: 100%; Guinea pig: 100%; Mouse: 93%; Zebrafish: 86%



[View online »](#)

Protein Pathways: Spliceosome

### Product images:



Host: Rabbit; Target Name: EFTUD2; Sample Tissue: Jurkat Whole Cell lysates; Antibody Dilution: 1.0 ug/ml