

Product datasheet for **TA335752**

NUP155 Rabbit Polyclonal Antibody

Product data:

Product Type:	Primary Antibodies
Applications:	WB
Recommended Dilution:	WB
Reactivity:	Human
Host:	Rabbit
Isotype:	IgG
Clonality:	Polyclonal
Immunogen:	The immunogen for Anti-NUP155 Antibody: synthetic peptide directed towards the middle region of human NUP155. Synthetic peptide located within the following region: ISLHLQDICPLLYSTDDAICSKANELLQRSRQVQNKTEKERMLRESLKEY
Formulation:	Liquid. Purified antibody supplied in 1x PBS buffer with 0.09% (w/v) sodium azide and 2% sucrose. <i>Note that this product is shipped as lyophilized powder to China customers.</i>
Purification:	Affinity Purified
Conjugation:	Unconjugated
Storage:	Store at -20°C as received.
Stability:	Stable for 12 months from date of receipt.
Predicted Protein Size:	147 kDa
Gene Name:	nucleoporin 155kDa
Database Link:	NP_004289 Entrez Gene 9631 Human O75694



[View online »](#)

Background:

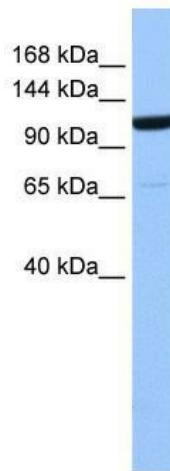
Nucleoporins are the main components of the nuclear pore complex (NPC) of eukaryotic cells. They are involved in the bidirectional trafficking of molecules, especially mRNAs and proteins, between the nucleus and the cytoplasm. NUP155 does not contain the typical FG repeat sequences found in most vertebrate nucleoporins. Nucleoporins are the main components of the nuclear pore complex (NPC) of eukaryotic cells. They are involved in the bidirectional trafficking of molecules, especially mRNAs and proteins, between the nucleus and the cytoplasm. The protein encoded by this gene does not contain the typical FG repeat sequences found in most vertebrate nucleoporins. Two protein isoforms are encoded by transcript variants of this gene.

Synonyms:

ATFB15; N155

Note:

Immunogen Sequence Homology: Human: 100%; Rabbit: 100%; Dog: 93%; Pig: 93%; Rat: 93%; Horse: 93%; Mouse: 86%; Bovine: 86%; Guinea pig: 86%; Zebrafish: 79%

Product images:

WB Suggested Anti-NUP155 Antibody Titration:
0.2-1 ug/ml; Positive Control: 721_B cell lysate