

## Product datasheet for TA335751

### NUP155 Rabbit Polyclonal Antibody

#### Product data:

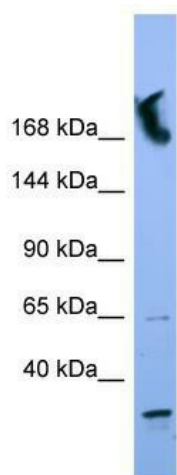
Product Type:	Primary Antibodies
Applications:	WB
Recommended Dilution:	WB
Reactivity:	Human
Host:	Rabbit
Isotype:	IgG
Clonality:	Polyclonal
Immunogen:	The immunogen for Anti-NUP155 Antibody: synthetic peptide directed towards the N terminal of human NUP155. Synthetic peptide located within the following region: YPLQGPGLLSVPNLPEISSIRRVPLPPELVEQFGHMQCNCMMGVFPPISR
Formulation:	Liquid. Purified antibody supplied in 1x PBS buffer with 0.09% (w/v) sodium azide and 2% sucrose. <i>Note that this product is shipped as lyophilized powder to China customers.</i>
Purification:	Affinity Purified
Conjugation:	Unconjugated
Storage:	Store at -20°C as received.
Stability:	Stable for 12 months from date of receipt.
Predicted Protein Size:	147 kDa
Gene Name:	nucleoporin 155kDa
Database Link:	<a href="#">NP_004289</a> <a href="#">Entrez Gene 9631 Human</a> <a href="#">O75694</a>
Background:	Nucleoporins are the main components of the nuclear pore complex (NPC) of eukaryotic cells. They are involved in the bidirectional trafficking of molecules, especially mRNAs and proteins, between the nucleus and the cytoplasm. NUP155 does not contain the typical FG repeat sequences found in most vertebrate nucleoporins.
Synonyms:	ATFB15; N155



[View online »](#)

**Note:** Immunogen Sequence Homology: Dog: 100%; Pig: 100%; Rat: 100%; Human: 100%; Rabbit: 100%; Guinea pig: 100%; Horse: 93%; Mouse: 93%; Bovine: 93%; Zebrafish: 93%

### Product images:



WB Suggested Anti-NUP155 Antibody Titration:  
0.2-1 ug/ml; ELISA Titer: 1: 1562500; Positive  
Control: HT1080 cell lysate