

Product datasheet for **TA335750**

Aspartate beta hydroxylase (ASPH) Rabbit Polyclonal Antibody

Product data:

Product Type:	Primary Antibodies
Applications:	WB
Recommended Dilution:	WB
Reactivity:	Human
Host:	Rabbit
Isotype:	IgG
Clonality:	Polyclonal
Immunogen:	The immunogen for Anti-ASPH Antibody: synthetic peptide directed towards the middle region of human ASPH. Synthetic peptide located within the following region: ETNRKTDDPEQKAKVKKKKPKLLNKFDKTIKAELDAAEKLKRKGKIEEAV
Formulation:	Liquid. Purified antibody supplied in 1x PBS buffer with 0.09% (w/v) sodium azide and 2% sucrose. <i>Note that this product is shipped as lyophilized powder to China customers.</i>
Purification:	Protein A purified
Conjugation:	Unconjugated
Storage:	Store at -20°C as received.
Stability:	Stable for 12 months from date of receipt.
Predicted Protein Size:	86 kDa
Gene Name:	aspartate beta-hydroxylase
Database Link:	NP_004309 Entrez Gene 444 Human Q12797
Background:	ASPH is thought to play an important role in calcium homeostasis. Alternative splicing of this gene results in five transcript variants which vary in protein translation, the coding of catalytic domains, and tissue expression. Variation among these transcripts impacts their functions which involve roles in the calcium storage and release process in the endoplasmic and sarcoplasmic reticulum as well as hydroxylation of aspartic acid and asparagine in epidermal growth factor-like domains of various proteins.



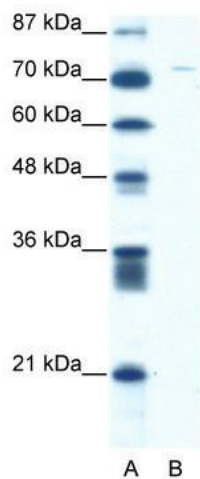
[View online »](#)

Synonyms: AAH; BAH; CASQ2BP1; FDLAB; HAAH; JCTN; junctin

Note: Immunogen Sequence Homology: Dog: 100%; Pig: 100%; Rat: 100%; Horse: 100%; Human: 100%; Mouse: 100%; Bovine: 100%; Guinea pig: 100%

Protein Families: Druggable Genome, Transmembrane

Product images:



WB Suggested Anti-ASPH Antibody Titration: 5.0 ug/ml; ELISA Titer: 1:312500; Positive Control: Jurkat cell lysate