

Product datasheet for **TA335748**

EGR3 Rabbit Polyclonal Antibody

Product data:

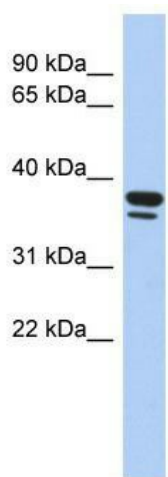
| | |
|-------------------------|---|
| Product Type: | Primary Antibodies |
| Applications: | IHC, WB |
| Recommended Dilution: | IHC, WB |
| Reactivity: | Human |
| Host: | Rabbit |
| Isotype: | IgG |
| Clonality: | Polyclonal |
| Immunogen: | The immunogen for Anti-EGR3 Antibody: synthetic peptide directed towards the middle region of human EGR3. Synthetic peptide located within the following region: ALPPYSNCGDLYSEPVSFHDPQGNPGLAYSPQDYQSAKPALDSNLFPMIP |
| Formulation: | Liquid. Purified antibody supplied in 1x PBS buffer with 0.09% (w/v) sodium azide and 2% sucrose. <i>Note that this product is shipped as lyophilized powder to China customers.</i> |
| Purification: | Affinity Purified |
| Conjugation: | Unconjugated |
| Storage: | Store at -20°C as received. |
| Stability: | Stable for 12 months from date of receipt. |
| Predicted Protein Size: | 42 kDa |
| Gene Name: | early growth response 3 |
| Database Link: | NP_004421 Entrez Gene 1960 Human Q06889 |
| Background: | EGR3 is a probable transcription factor involved in muscle spindle development. The gene encodes a transcriptional regulator that belongs to the EGR family of C2H2-type zinc-finger proteins. It is an immediate-early growth response gene which is induced by mitogenic stimulation. The protein encoded by this gene participates in the transcriptional regulation of genes in controlling biological rhythm. It may also play a role in muscle development. |
| Synonyms: | EGR-3; PILOT |



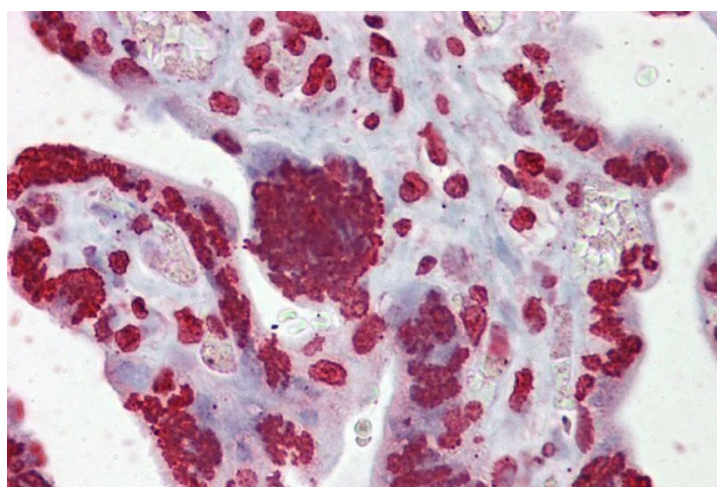
[View online »](#)

Note: Immunogen Sequence Homology: Dog: 100%; Pig: 100%; Rat: 100%; Horse: 100%; Human: 100%; Mouse: 100%; Bovine: 100%; Rabbit: 100%; Guinea pig: 100%

Product images:



WB Suggested Anti-EGR3 Antibody Titration: 0.2-1 ug/ml; ELISA Titer: 1:2500; Positive Control: Human Stomach



Immunohistochemistry with Placenta tissue at an antibody concentration of 5 ug/ml using anti-EGR3 antibody