

Product datasheet for **TA335744**

YB1 (YBX1) Rabbit Polyclonal Antibody

Product data:

Product Type:	Primary Antibodies
Applications:	IHC, WB
Recommended Dilution:	WB, IHC
Reactivity:	Human, Mouse
Host:	Rabbit
Isotype:	IgG
Clonality:	Polyclonal
Immunogen:	The immunogen for Anti-YBX1 Antibody: synthetic peptide directed towards the middle region of human YBX1. Synthetic peptide located within the following region: NHYRRYPRRRGPPRNYQQNYQNSESGEKNEGSESAPEGQAQRRPYRRRR
Formulation:	Liquid. Purified antibody supplied in 1x PBS buffer with 0.09% (w/v) sodium azide and 2% sucrose. <i>Note that this product is shipped as lyophilized powder to China customers.</i>
Purification:	Affinity Purified
Conjugation:	Unconjugated
Storage:	Store at -20°C as received.
Stability:	Stable for 12 months from date of receipt.
Predicted Protein Size:	36 kDa
Gene Name:	Y-box binding protein 1
Database Link:	NP_004550 Entrez Gene 22608 Mouse Entrez Gene 4904 Human P67809



[View online »](#)

Background:

YBX1 binds to splice sites in pre-mRNA and regulates splice site selection. YBX1 binds and stabilizes cytoplasmic mRNA. YBX1 contributes to the regulation of translation by modulating the interaction between the mRNA and eukaryotic initiation factors. YBX1 binds to promoters that contain a Y-box (5'-CTGATTGGCCAA-3'), such as HLA class II genes. YBX1 regulates the transcription of numerous genes. YBX1 promotes separation of DNA strands that contain mismatches or are modified by cisplatin. YBX1 has endonucleolytic activity and can introduce nicks or breaks into double-stranded DNA (in vitro). YBX1 may play a role in DNA repair. YBX1 is the component of the CRD-mediated complex that promotes MYC mRNA stability.

Synonyms:

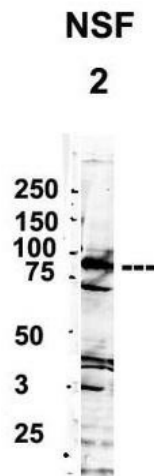
BP-8; CSDA2; CSDB; DBPB; MDR-NF1; NSEP-1; NSEP1; YB-1; YB1

Note:

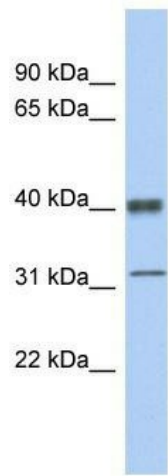
Immunogen Sequence Homology: Dog: 100%; Pig: 100%; Rat: 100%; Horse: 100%; Human: 100%; Mouse: 100%; Sheep: 100%; Bovine: 100%; Rabbit: 100%; Guinea pig: 100%

Protein Families:

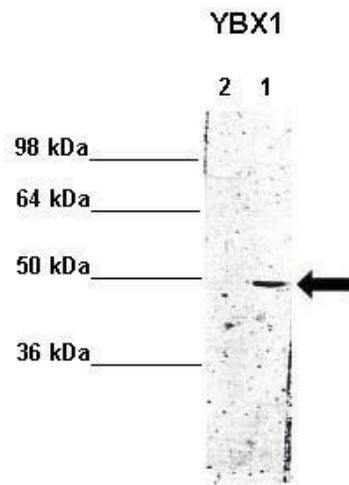
ES Cell Differentiation/IPS, Transcription Factors

Product images:

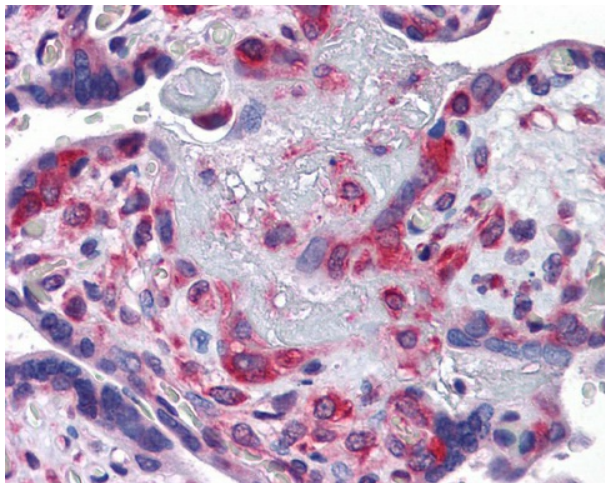
YBX1 antibody - middle region validated by WB using 1. Human NT-2 cells (60ug) at 2 ug/ml.



WB Suggested Anti-YBX1 Antibody Titration: 0.2-1 ug/ml; ELISA Titer: 1:312500; Positive Control: Human Spleen



WB Suggested Anti-YBX1 Antibody ; Positive Control: Lane 1: 5ug mouse brain cytoplasm Lane 2: 5ug mouse brain nucleus; Primary Antibody Dilution : 1:1000; Secondary Antibody : Anti rabbit - IR-dye; Secondary Antibody Dilution : 1:10,000; Submitted by: Anonymous



Placenta