

Product datasheet for **TA335743**

YB1 (YBX1) Rabbit Polyclonal Antibody

Product data:

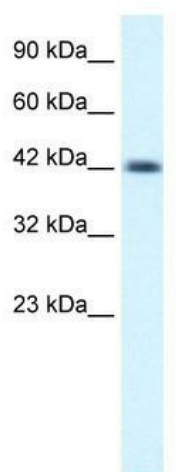
Product Type:	Primary Antibodies
Applications:	WB
Recommended Dilution:	WB
Reactivity:	Human
Host:	Rabbit
Isotype:	IgG
Clonality:	Polyclonal
Immunogen:	The immunogen for Anti-NSEP1 Antibody: synthetic peptide directed towards the C terminal of human NSEP1. Synthetic peptide located within the following region: NMYRGYRPRFRRGPPRQRQPREDGNEEDKENQGDETQGQPPQRRYRRNF
Formulation:	Liquid. Purified antibody supplied in 1x PBS buffer with 0.09% (w/v) sodium azide and 2% sucrose. <i>Note that this product is shipped as lyophilized powder to China customers.</i>
Purification:	Affinity Purified
Conjugation:	Unconjugated
Storage:	Store at -20°C as received.
Stability:	Stable for 12 months from date of receipt.
Predicted Protein Size:	36 kDa
Gene Name:	Y-box binding protein 1
Database Link:	NP_004550 Entrez Gene 4904 Human P67809
Background:	NSEP1 is a cell cycle stage-specific transcription factor important for cell proliferation. NSEP1 encodes a protein that correlates with P-glycoprotein expression in human breast carcinoma.
Synonyms:	BP-8; CSDA2; CSDB; DBPB; MDR-NF1; NSEP-1; NSEP1; YB-1; YB1
Note:	Immunogen Sequence Homology: Dog: 100%; Pig: 100%; Rat: 100%; Horse: 100%; Human: 100%; Mouse: 100%; Sheep: 100%; Bovine: 100%; Rabbit: 100%; Guinea pig: 100%; Yeast: 92%



[View online »](#)

Protein Families: ES Cell Differentiation/IPS, Transcription Factors

Product images:



WB Suggested Anti-NSEP1 Antibody Titration: 0.2-1 ug/ml; ELISA Titer: 1:62500; Positive Control: Jurkat cell lysate YBX1 is strongly supported by BioGPS gene expression data to be expressed in Human Jurkat cells