

Product datasheet for **TA335741**

Neuro D4 (DPF1) Rabbit Polyclonal Antibody

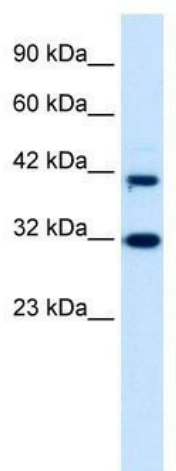
Product data:

Product Type:	Primary Antibodies
Applications:	WB
Recommended Dilution:	WB
Reactivity:	Rat, Human
Host:	Rabbit
Isotype:	IgG
Clonality:	Polyclonal
Immunogen:	The immunogen for Anti-DPF1 Antibody: synthetic peptide directed towards the middle region of human DPF1. Synthetic peptide located within the following region: KELAWVPEAQRKHTAKKAPDGTVIPNGYCDFCLGGSKKTGCPEDLISCAD
Formulation:	Liquid. Purified antibody supplied in 1x PBS buffer with 0.09% (w/v) sodium azide and 2% sucrose. <i>Note that this product is shipped as lyophilized powder to China customers.</i>
Purification:	Affinity Purified
Conjugation:	Unconjugated
Storage:	Store at -20°C as received.
Stability:	Stable for 12 months from date of receipt.
Predicted Protein Size:	40 kDa
Gene Name:	double PHD fingers 1
Database Link:	NP_004638 Entrez Gene 50545 Rat Entrez Gene 8193 Human Q92782
Background:	Part of the d4 family of zinc finger proteins, DPF1 has been localized on chromosome 19.
Synonyms:	BAF45b; NEUD4; neuro-d4
Note:	Immunogen Sequence Homology: Dog: 100%; Pig: 100%; Rat: 100%; Horse: 100%; Human: 100%; Mouse: 100%; Bovine: 100%; Guinea pig: 100%
Protein Families:	Druggable Genome, Transcription Factors



[View online »](#)

Product images:



WB Suggested Anti-DPF1 Antibody Titration: 0.2-1 ug/ml; ELISA Titer: 1:312500; Positive Control: HepG2 cell lysate