

## Product datasheet for **TA335738**

### ASH2L Rabbit Polyclonal Antibody

#### Product data:

Product Type:	Primary Antibodies
Applications:	IHC, WB
Recommended Dilution:	WB, IHC
Reactivity:	Human
Host:	Rabbit
Isotype:	IgG
Clonality:	Polyclonal
Immunogen:	The immunogen for Anti-ASH2L Antibody: synthetic peptide directed towards the middle region of human ASH2L. Synthetic peptide located within the following region: AAGSSGKGRGAKRKQQDGGTTGTTKKARSDPLFSAQRLPPHGYPLEHPFN
Formulation:	Liquid. Purified antibody supplied in 1x PBS buffer with 0.09% (w/v) sodium azide and 2% sucrose. <i>Note that this product is shipped as lyophilized powder to China customers.</i>
Purification:	Affinity Purified
Conjugation:	Unconjugated
Storage:	Store at -20°C as received.
Stability:	Stable for 12 months from date of receipt.
Predicted Protein Size:	69 kDa
Gene Name:	ASH2 like histone lysine methyltransferase complex subunit
Database Link:	<a href="#">NP_004665</a> <a href="#">Entrez Gene 9070 Human</a> <a href="#">Q9UBL3</a>
Background:	ASH2L is a component of the Set1/Ash2 histone methyltransferase (HMT) complex, a complex that specifically methylates 'Lys-4' of histone H3, but not if the neighboring 'Lys-9' residue is already methylated. The protein may function as a transcriptional regulator and play a role in hematopoiesis.
Synonyms:	ASH2; ASH2L1; ASH2L2; Bre2



[View online »](#)

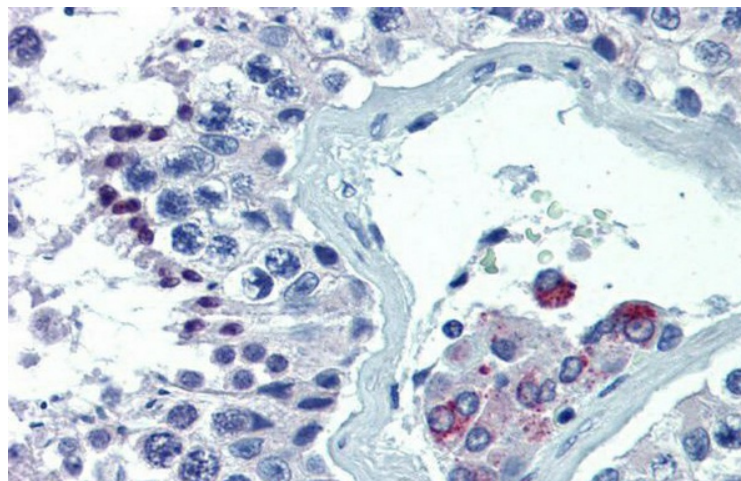
**Note:** Immunogen Sequence Homology: Dog: 100%; Pig: 100%; Rat: 100%; Horse: 100%; Human: 100%; Mouse: 100%; Rabbit: 100%; Guinea pig: 100%; Bovine: 86%

**Protein Families:** Druggable Genome, Transcription Factors

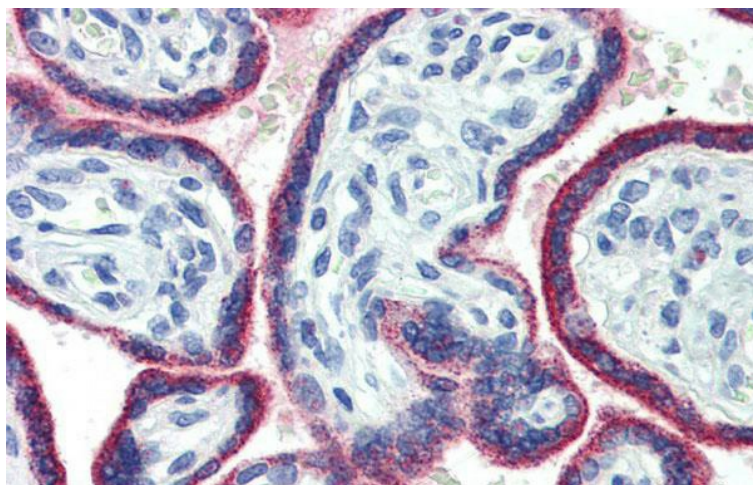
**Product images:**



WB Suggested Anti-ASH2L Antibody Titration: 0.2-1 ug/ml; ELISA Titer: 1:1562500; Positive Control: HeLa cell lysate



Immunohistochemistry with Human Testis lysate tissue at an antibody concentration of 5.0 ug/ml using anti-ASH2L antibody



Immunohistochemistry with Human Placenta lysate tissue at an antibody concentration of 5.0 ug/ml using anti-ASH2L antibody