

Product datasheet for **TA335737**

Apg12 (ATG12) Rabbit Polyclonal Antibody

Product data:

Product Type:	Primary Antibodies
Applications:	WB
Recommended Dilution:	WB
Reactivity:	Human
Host:	Rabbit
Isotype:	IgG
Clonality:	Polyclonal
Immunogen:	The immunogen for Anti-ATG12 Antibody: synthetic peptide directed towards the middle region of human ATG12. Synthetic peptide located within the following region: KFLKLVASEQLFIYVNQSFAPSPDQEVGTLYECSGDKLVLYHCKSQAW
Formulation:	Liquid. Purified antibody supplied in 1x PBS buffer with 0.09% (w/v) sodium azide and 2% sucrose. <i>Note that this product is shipped as lyophilized powder to China customers.</i>
Purification:	Affinity Purified
Conjugation:	Unconjugated
Storage:	Store at -20°C as received.
Stability:	Stable for 12 months from date of receipt.
Predicted Protein Size:	21 kDa
Gene Name:	autophagy related 12
Database Link:	NP_004698 Entrez Gene 9140 Human O94817
Background:	Autophagy is a process of bulk protein degradation in which cytoplasmic components, including organelles, are enclosed in double-membrane structures called autophagosomes and delivered to lysosomes or vacuoles for degradation. ATG12 is the human homolog of a yeast protein involved in autophagy (Mizushima et al., 1998 [PubMed 9852036]).
Synonyms:	APG12; APG12L; FBR93; HAPG12

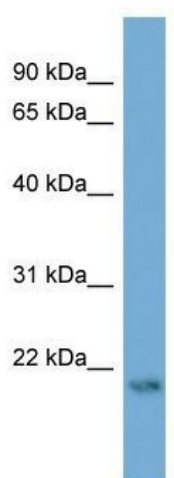


[View online »](#)

Note: Immunogen Sequence Homology: Dog: 100%; Pig: 100%; Rat: 100%; Horse: 100%; Human: 100%; Mouse: 100%; Bovine: 100%; Zebrafish: 100%; Guinea pig: 100%

Protein Pathways: Regulation of autophagy, RIG-I-like receptor signaling pathway

Product images:



WB Suggested Anti-ATG12 Antibody Titration: 0.2-1 ug/ml; ELISA Titer: 1: 1562500; Positive Control: 721_B cell lysate. ATG12 is strongly supported by BioGPS gene expression data to be expressed in Human 721_B cells