

Product datasheet for **TA335736**

CIAO1 Rabbit Polyclonal Antibody

Product data:

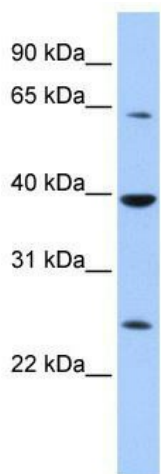
Product Type:	Primary Antibodies
Applications:	IHC, WB
Recommended Dilution:	WB, IHC
Reactivity:	Human
Host:	Rabbit
Isotype:	IgG
Clonality:	Polyclonal
Immunogen:	The immunogen for Anti-CIAO1 Antibody: synthetic peptide directed towards the middle region of human CIAO1. Synthetic peptide located within the following region: SVLNSHTQDVKHVWVHPSQELLASASYDDTVKLYREEEDDWVCCATLEGH
Formulation:	Liquid. Purified antibody supplied in 1x PBS buffer with 0.09% (w/v) sodium azide and 2% sucrose. <i>Note that this product is shipped as lyophilized powder to China customers.</i>
Purification:	Affinity Purified
Conjugation:	Unconjugated
Storage:	Store at -20°C as received.
Stability:	Stable for 12 months from date of receipt.
Predicted Protein Size:	38 kDa
Gene Name:	cytosolic iron-sulfur assembly component 1
Database Link:	NP_004795 Entrez Gene 9391 Human O76071
Background:	CIAO1 belongs to the WD repeat CIA1 family. It seems to specifically modulate the transactivation activity of WT1.
Synonyms:	CIA1; WDR39
Note:	Immunogen Sequence Homology: Dog: 100%; Pig: 100%; Rat: 100%; Horse: 100%; Human: 100%; Mouse: 100%; Bovine: 100%; Rabbit: 100%; Yeast: 93%



[View online »](#)

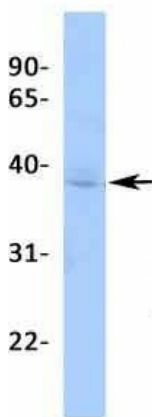
Protein Families: Transcription Factors

Product images:



WB Suggested Anti-CIAO1 Antibody Titration: 0.2-1 ug/ml; ELISA Titer: 1:62500; Positive Control: 721_B cell lysate CIAO1 is supported by BioGPS gene expression data to be expressed in 721_B

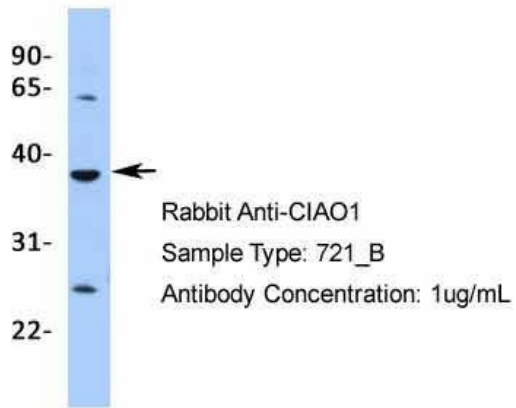
CIAO1



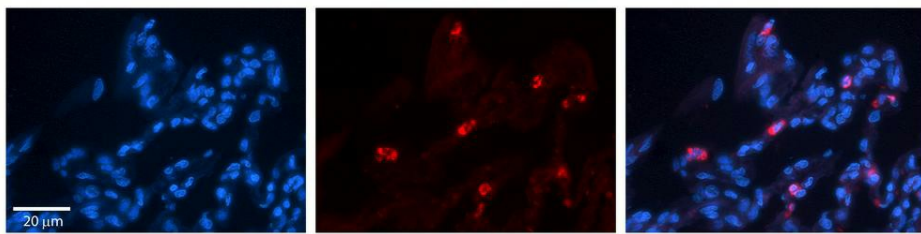
Rabbit Anti-CIAO1
 Sample Type: MCF7
 Antibody Concentration: 1ug/mL

Host: Rabbit; Target Name: CIAO1; Sample Tissue: MCF7; Antibody Dilution: 1.0 ug/ml. CIAO1 is supported by BioGPS gene expression data to be expressed in MCF7

CIAO1



Host: Rabbit; Target Name: CIAO1; Sample Tissue: 721_B; Antibody Dilution: 1.0 ug/ml. CIAO1 is supported by BioGPS gene expression data to be expressed in 721_B



Rabbit Anti-CIAO1 Antibody; Formalin Fixed Paraffin Embedded Tissue: Human Lung Tissue; Observed Staining: Cytoplasmic in alveolar type I cells; Primary Antibody Concentration: 1:100; Other Working Concentrations: 1/600; Secondary Antibody: Donkey anti-Rabbit-Cy3; Secondary Antibody Concentration: 1:200; Magnification: 20X; Exposure Time: 0.5–2.0 sec;