

Product datasheet for **TA335735**

CIAO1 Rabbit Polyclonal Antibody

Product data:

Product Type:	Primary Antibodies
Applications:	IHC, WB
Recommended Dilution:	WB, IHC
Reactivity:	Human
Host:	Rabbit
Isotype:	IgG
Clonality:	Polyclonal
Immunogen:	The immunogen for Anti-WDR39 Antibody: synthetic peptide directed towards the C terminal of human WDR39. Synthetic peptide located within the following region: LSGFHSRTIYDIAWCQLTGALATACGDDAIRVFQEDPNSDPQQPTFSLTA
Formulation:	Liquid. Purified antibody supplied in 1x PBS buffer with 0.09% (w/v) sodium azide and 2% sucrose. <i>Note that this product is shipped as lyophilized powder to China customers.</i>
Purification:	Protein A purified
Conjugation:	Unconjugated
Storage:	Store at -20°C as received.
Stability:	Stable for 12 months from date of receipt.
Predicted Protein Size:	38 kDa
Gene Name:	cytosolic iron-sulfur assembly component 1
Database Link:	NP_004795 Entrez Gene 9391 Human O76071
Background:	WDR39 is a member of the WD40 family of proteins. WDR39 specifically interacts with WT1 both in vitro and in vivo. This interaction results in a decrease in transcriptional activation mediated by WT1. WDR39 does not inhibit binding of WT1 to its consensus nucleotide sequence and does not affect the repression activity of WT1. Thus, WDR39 appears to specifically modulate the transactivation activity of WT1 and may function to regulate the physiological functions of WT1 in cell growth and differentiation.



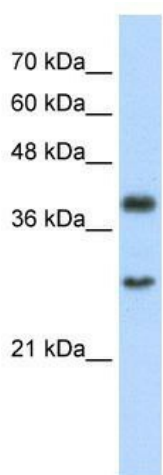
[View online »](#)

Synonyms: CIA1; WDR39

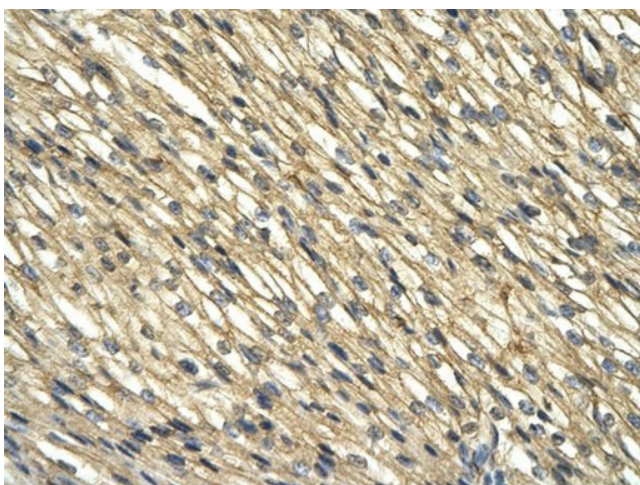
Note: Immunogen Sequence Homology: Human: 100%; Dog: 86%; Pig: 86%; Rat: 86%; Horse: 86%; Mouse: 86%; Bovine: 86%; Rabbit: 86%

Protein Families: Transcription Factors

Product images:



WB Suggested Anti-WDR39 Antibody Titration: 2.5 ug/ml; Positive Control: Jurkat cell lysate. CIAO1 is supported by BioGPS gene expression data to be expressed in Jurkat



Human Heart